



Situation Update

KEY HIGHLIGHTS

- ❖ **Twelve (12) new COVID-19 confirmed cases** have been reported in the last 24 hours bringing the cumulative total of **COVID-19 confirmed cases** in Uganda to **1,025**. No COVID-19 related death has been registered to date.
- ❖ **Seventeen (17) non-Ugandan truck drivers** tested positive for COVID-19 and were not allowed entry into the country.
- ❖ A total of **194 confirmed cases (172 Ugandans; 20 non-Ugandans; 2 refugees)** are currently admitted across **15 health facilities** and a cumulative total of **972 patients** have recovered and been discharged.
- ❖ Sixty-one percent (623/1,025) are **imported cases** and 39% are **locally transmitted** (402/1,025).
- ❖ A total of **2,292 laboratory samples** were tested today bringing it to a cumulative total of **226,403 samples** tested.
- ❖ A cumulative total of **12,986 contacts (1,759 still under follow up)** have been listed to date, **11,227 (86%)** of whom have completed the mandatory 14-day follow up period and been discharged from daily follow up.
- ❖ **Three (3) repatriation flights** carrying **126 Ugandan citizens and residents** from Ethiopia (82; 39) and DRC (5) via Ethiopian airlines (2) and Uganda airlines (1) arrived and all are under mandatory quarantine.



Summary of COVID-19 outbreak in Uganda

Summary statistics as of 11 th July 2020 at 22:00 hrs	
Individuals under institutional quarantine today	1,616
Suspected cases	00
Probable cases	00
Total Confirmed Cases	1,025
Cumulative deaths (suspected, probable or confirmed)	00
Health facilities	00
Community	00
Deaths among confirmed cases	00
Confirmed cases on admission	194
Cumulative number of discharged cases	972
Runaways from isolation	00
Cumulative contacts listed	12,986
Contacts that have completed 14 days	11,227
Number of contacts still under follow up	1,759
Contacts followed up today	1,724 (98%)
Cumulative contacts with symptoms	460
Contacts lost to follow up	00
Specimens collected and sent to the lab today	2,292
PoE	1,794
Contacts and alerts	498
Health workers	00
Cumulative specimens collected	226,403
Number of cases with positive results today	12
POE	08
Contacts and alerts	04
Returnees via EIA	00
Specimens with pending results	00



2. Public Health Actions

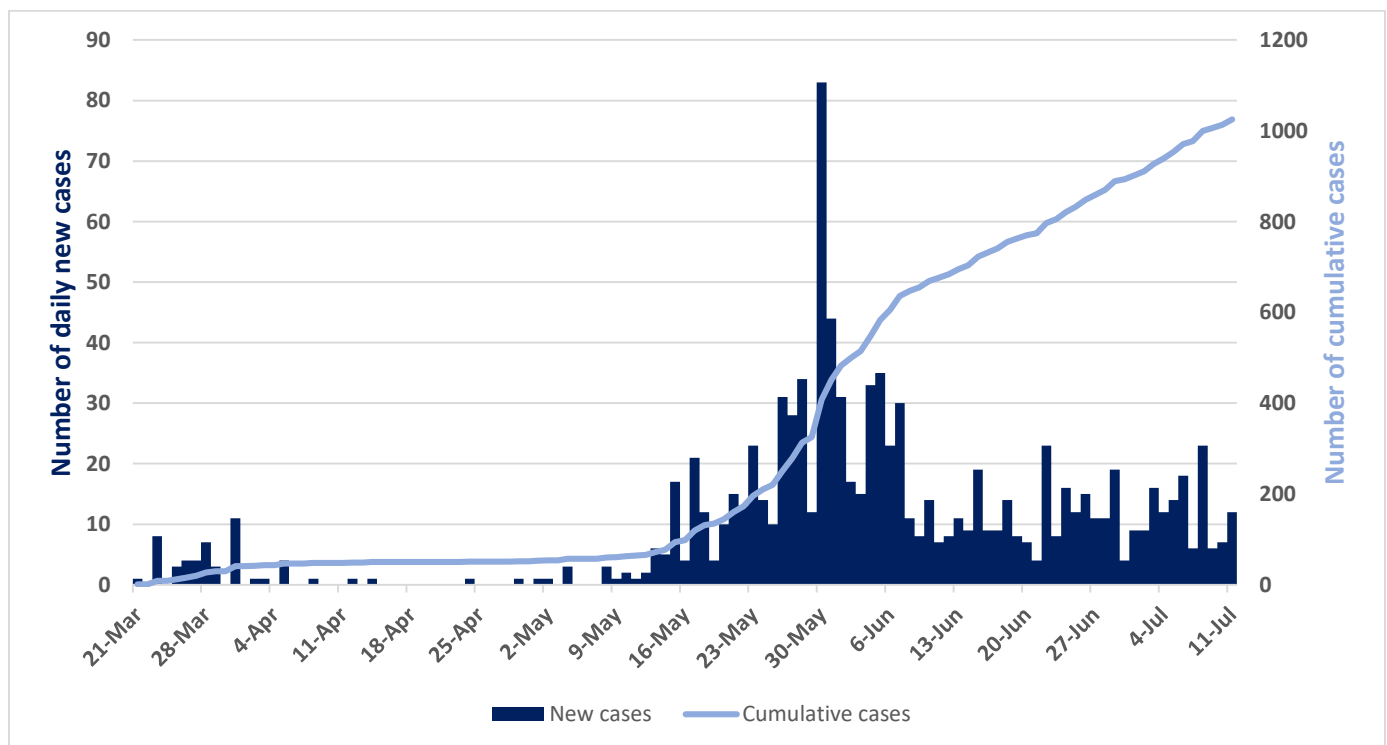
COORDINATION

- The IMT meeting chaired by the Incident Commander continues to meet twice daily.

SURVEILLANCE

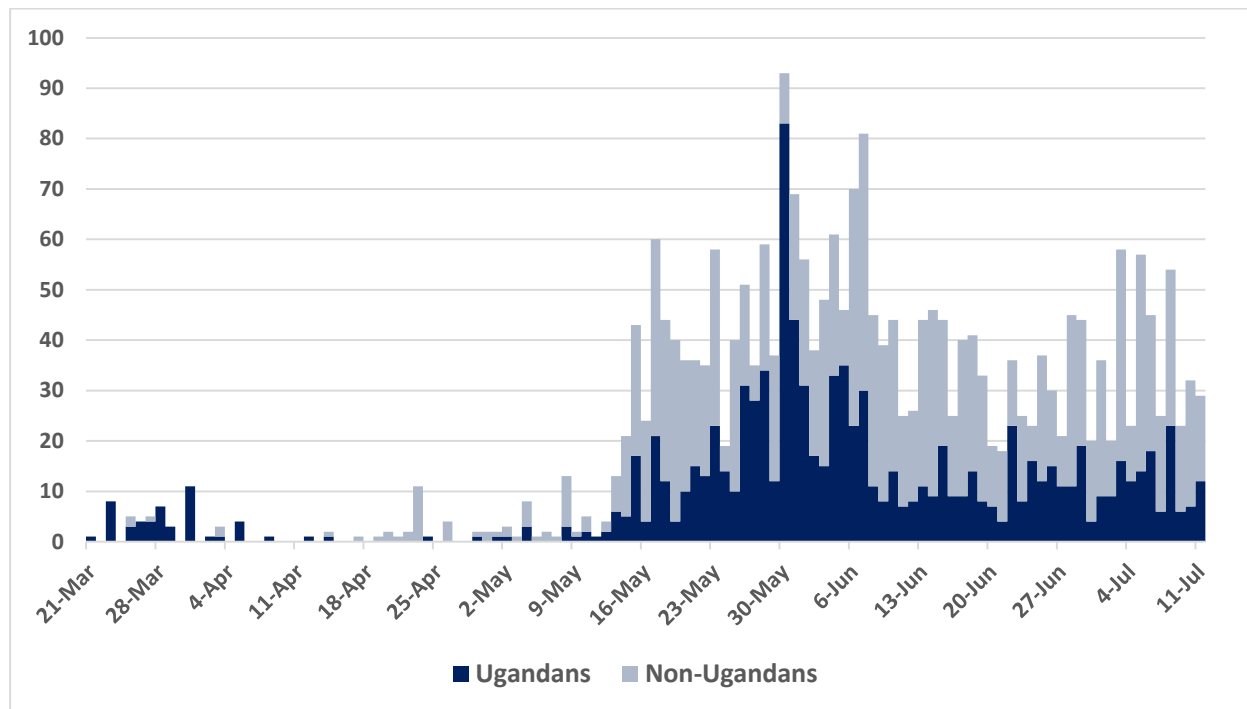
- The new confirmed cases include 7 truck drivers who arrived via Malaba (5), Mirama (1) and Elegu (1) borders, a UPDF soldier and 4 community cases from Tororo (2) and Lira (1) districts.

Epidemic curve of confirmed Ugandans (n=1,025)

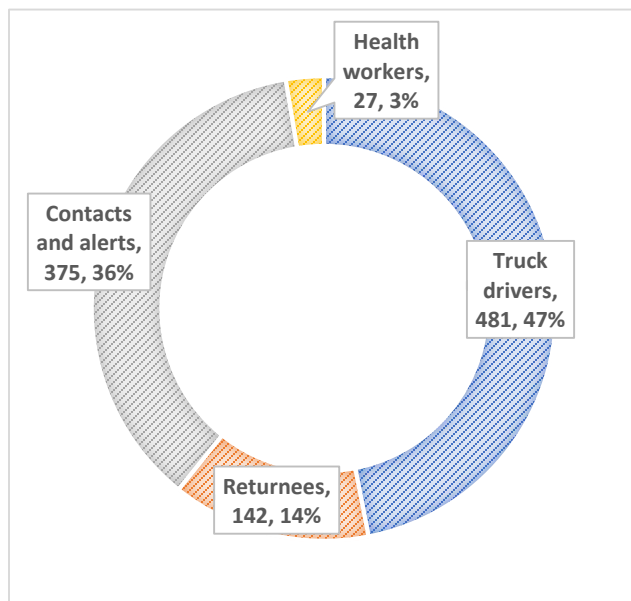




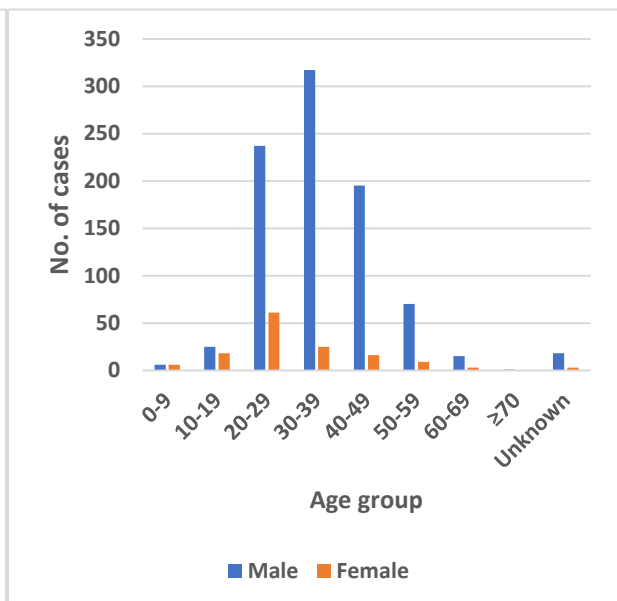
Epidemic curve of Ugandan and non-Ugandan confirmed cases (n=2,511)



Distribution of Ugandan cases

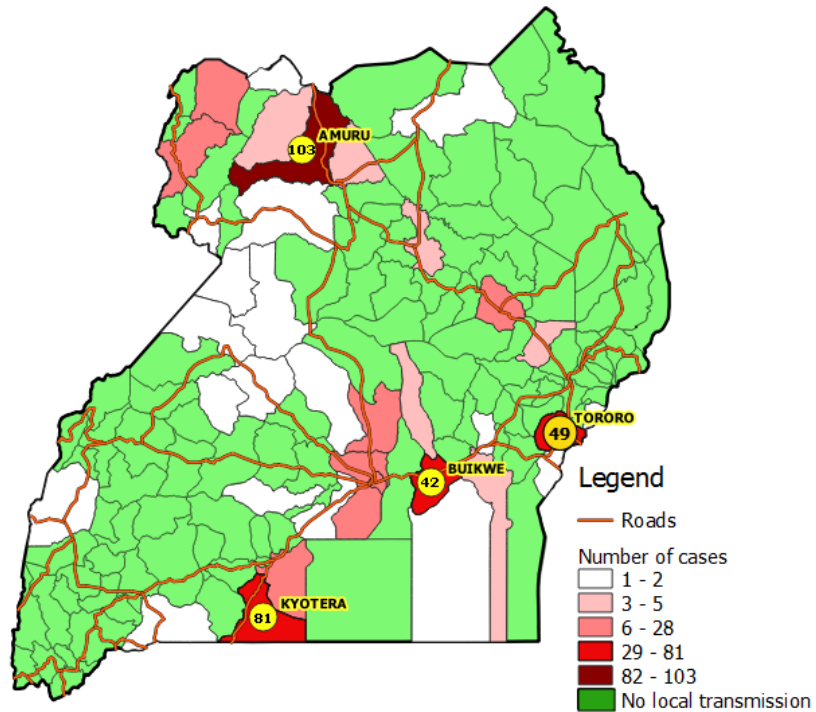


Age and sex distribution of Ugandan cases

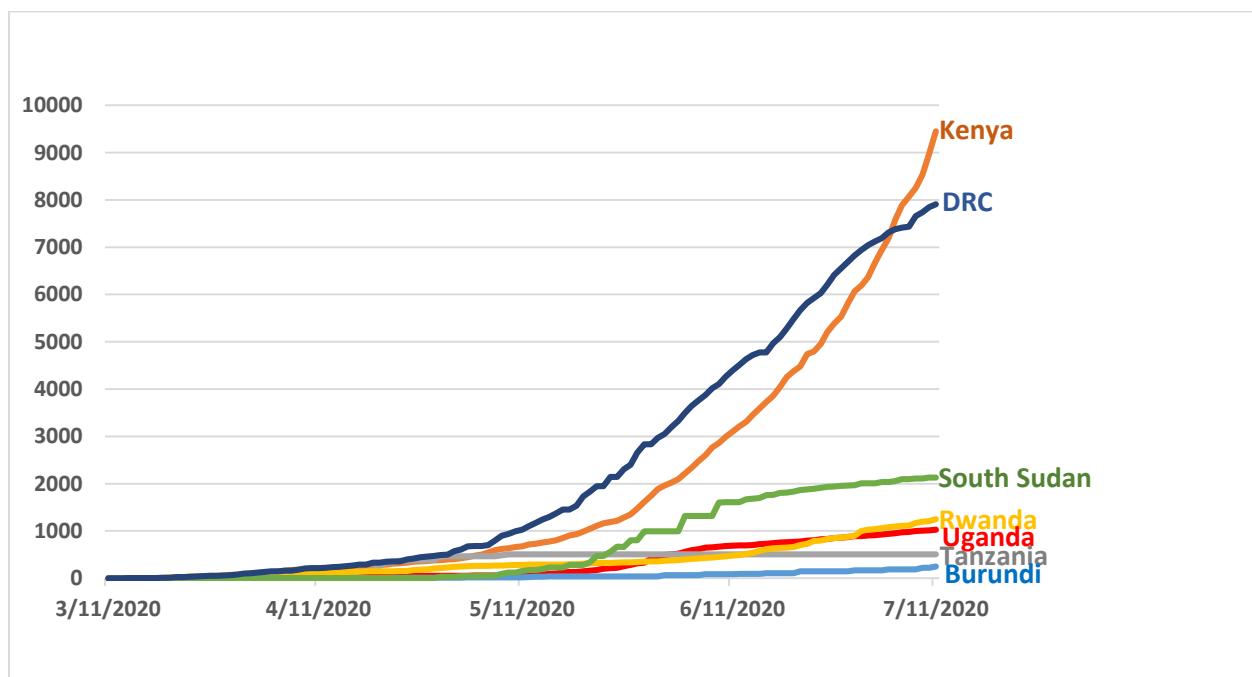




Distribution of locally transmitted cases by district of sample collection (n=402)



Comparative analysis of progression of COVID-19 pandemic in East Africa





- The surveillance pillar continues to conduct **manage alerts**; the table below presents a summary on this:

Variable	Indicator	Output
Alerts management	Incoming calls	540
	Signals not investigated at the end of previous day	23
	New signals received	163
	Total signals	186
	Signals validated for follow-up (Alerts)	89
	Alerts investigated with collection of lab sample	63

CASE MANAGEMENT

- There are 194 confirmed cases that are currently admitted across districts in the country and all are in stable condition.

Isolation unit	No. of confirmed cases on admission	Discharges	Bed capacity
Entebbe Hospital	04	159	125
Masaka RRH	03	74	41
Gulu RRH	44	118	74
Lira RRH	23	28	20
Arua RRH	11	54	34
Mbale RRH	18	57	50
Jinja RRH	23	54	28
Naguru RRH	02	12	12
Mulago NRH	25	332	260



Isolation unit	No. of confirmed cases on admission	Discharges	Bed capacity
Mbarara RRH	09	16	30
Hoima RRH	05	15	16
Mubende RRH	00	22	25
Fort Portal RRH	00	03	26
Adjumani Hospital	00	01	02
Soroti RRH	07	17	45
Kabale RRH	09	08	30
Moroto RRH	00	02	30
Bombo Military Hospital	11	00	-

RISK COMMUNICATION AND SOCIAL MOBILIZATION

- A risk communication plan for the returnees through EIA has been developed and will be presented to the IMT.
- The team continues to release daily press briefs to update the general public on the COVID-19 outbreak.

LOGISTICS

- Stock status for COVID-19 response:

Item	Month of Stock	Pipeline Month of Stock
Surgical masks	0.44	1.68
Surgical N95 respirators	0.20	2.60
Face shield	0.12	0.82
Protective goggles	0.45	5.00
Examination gloves	0.03	2.44
Open System (ABI- 7500 SARS COV-2 test) [1 test]	0.13	1.85
SARS-CoV-2 RT-PCR Kit 1.0 [96 tests]	0.31	1.45
Nasopharyngeal swab with Transport Media	0.48	1.18



ICT AND INNOVATIONS

- The Uganda COVID-19 dashboard can be accessed at <https://covid19.gou.go.ug/>

3. Challenges

- Lack of institutional quarantine sites in Kyotera district which is reporting high numbers of local transmission.
- There is no waiting area for truck drivers at Mutukula POE after testing.
- Stock out of IPC supplies; Gowns, N95 Face Masks.
- CTUs are understaffed, with too much work shared among nurses and doctors.
- Need to increase psychosocial support to both the patients and staff to address the ever-increasing stigma and trauma associated with COVID-19.
- Delayed availability of transport for recovered people to resettle them back to their communities.
- Isolation units lack beds and mattresses, beddings for those with expanded admission capacity.

4. Conclusion

The Ministry of Health in collaboration with other government ministries, agencies and departments and districts continues to strengthen the COVID-19 outbreak response mechanisms.