



Situation Update

KEY HIGHLIGHTS

- ❖ **Ten (10) new COVID-19 confirmed cases** have been reported in the last 24 hours bringing the cumulative total of **COVID-19 confirmed cases** in Uganda to **1,223**. **Five (5) COVID-19 related deaths** have been reported to date (**CFR: 0.4%**).
- ❖ **Eleven (11) non-Ugandan truck drivers** tested positive for COVID-19 and were not allowed entry into the country.
- ❖ A total of **116 confirmed cases (106 Ugandans; 9 non-Ugandans; 1 refugee)** are currently admitted across **15 health facilities** and a cumulative total of **1,264 patients (1,102 Ugandans; 162 non-Ugandans)** have recovered and been discharged. The new confirmed cases are in process of being evacuated to an isolation unit.
- ❖ Sixty percent (732/1,223) are **imported cases** and 40% are **locally transmitted** (491/1,223).
- ❖ A total of **3,577 laboratory samples** were tested today bringing it to a cumulative total of **288,367 samples** tested.
- ❖ A cumulative total of **15,342 contacts (798 still under follow up)** have been listed to date, **14,544 (95%)** of whom have completed the mandatory 14-day follow up period and been discharged from daily follow up.



Summary of COVID-19 outbreak in Uganda

Summary statistics as of 05 August 2020 at 22:00 hrs	
Individuals under institutional quarantine today	1,939
Suspected cases	00
Probable cases	00
Total Confirmed Cases	1,223
Cumulative deaths (suspected, probable or confirmed)	05
Health facilities	05
Community	00
Confirmed cases on admission	116
Ugandans	106
Non-Ugandans and refugees	10
Cumulative number of discharged cases	1,264
Ugandans	1,102
Non-Ugandans	162
Runaways from isolation	02
Cumulative contacts listed	15,342
Contacts that have completed 14 days	14,544
Contacts still under follow up	798
Contacts followed up today	798 (100%)
Contacts lost to follow up	00
Specimens collected and sent to the lab today	3,577
PoE	2,078
Contacts and alerts	1,487
Health workers	12
Cumulative specimens collected	288,367
Number of cases with positive results today	10
Ground crossing POE	03
Contacts and alerts	07
Returnees via EIA	00
Specimens with pending results	00



2. Public Health Actions

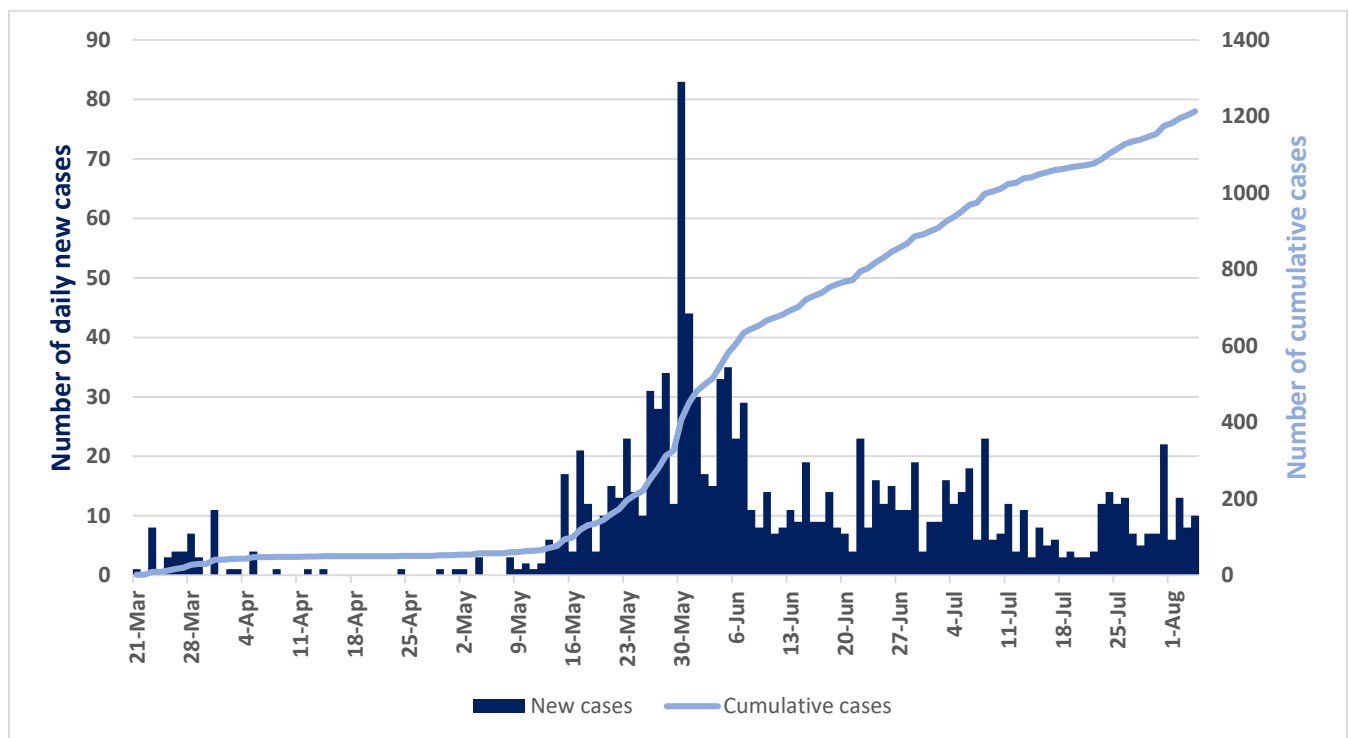
COORDINATION

- The IMT meeting chaired by the Incident Commander continues to meet twice daily.

EPIDEMIOLOGY AND SURVEILLANCE

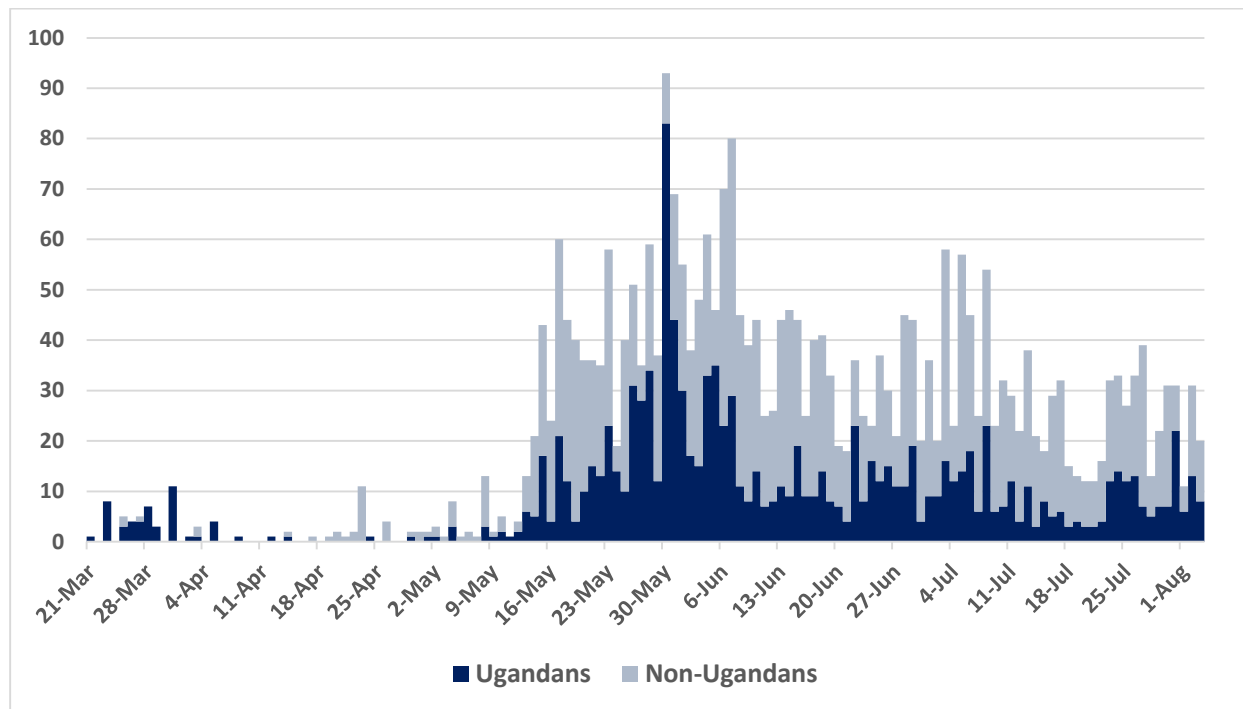
- The new confirmed cases include 3 truck drivers from Malaba (2) and Elegu (1) borders and 6 contacts from Namisindwa (1) and Wakiso (1) districts.

Epidemic curve of confirmed Ugandans (n=1,223)

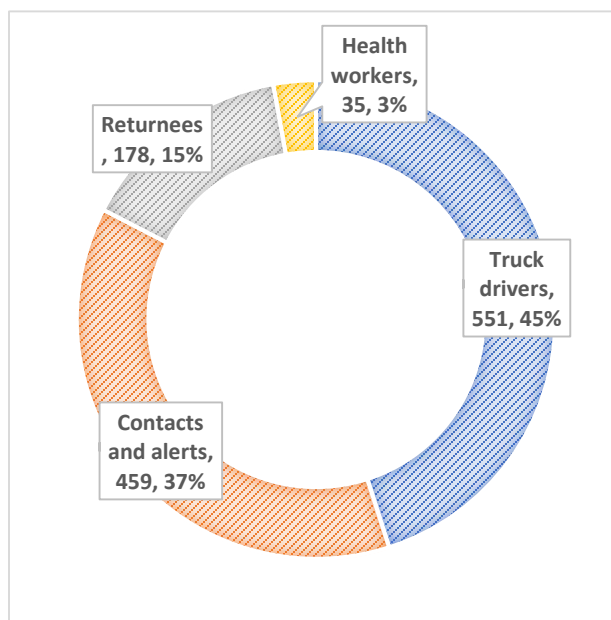




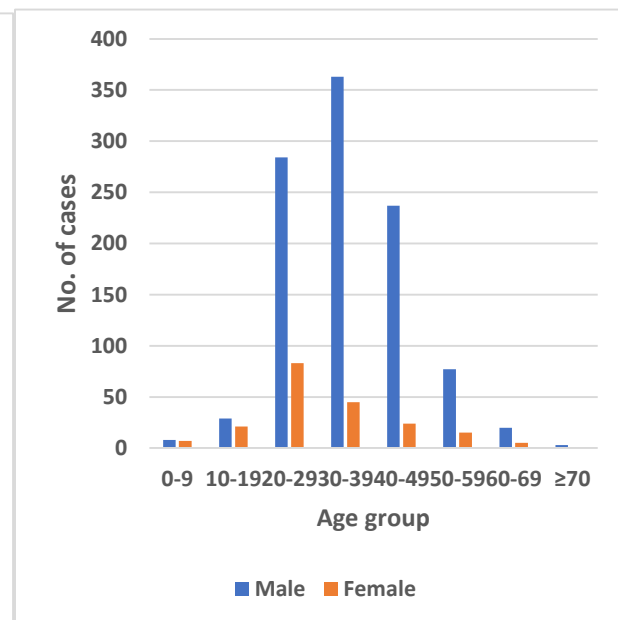
Epidemic curve of Ugandan and non-Ugandan confirmed cases (n=3,107)



Distribution of Ugandan cases

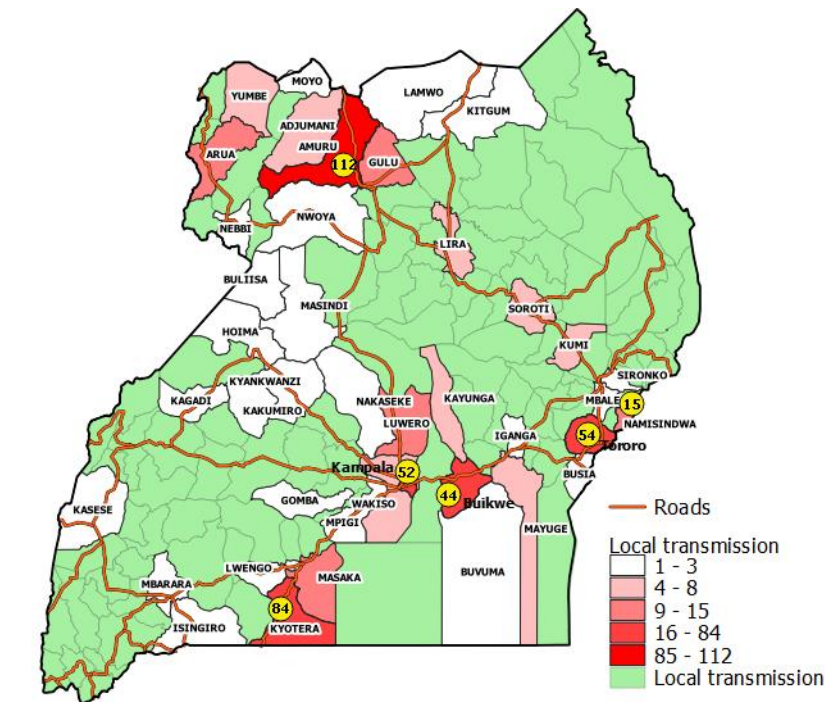


Age and sex distribution of Ugandan cases

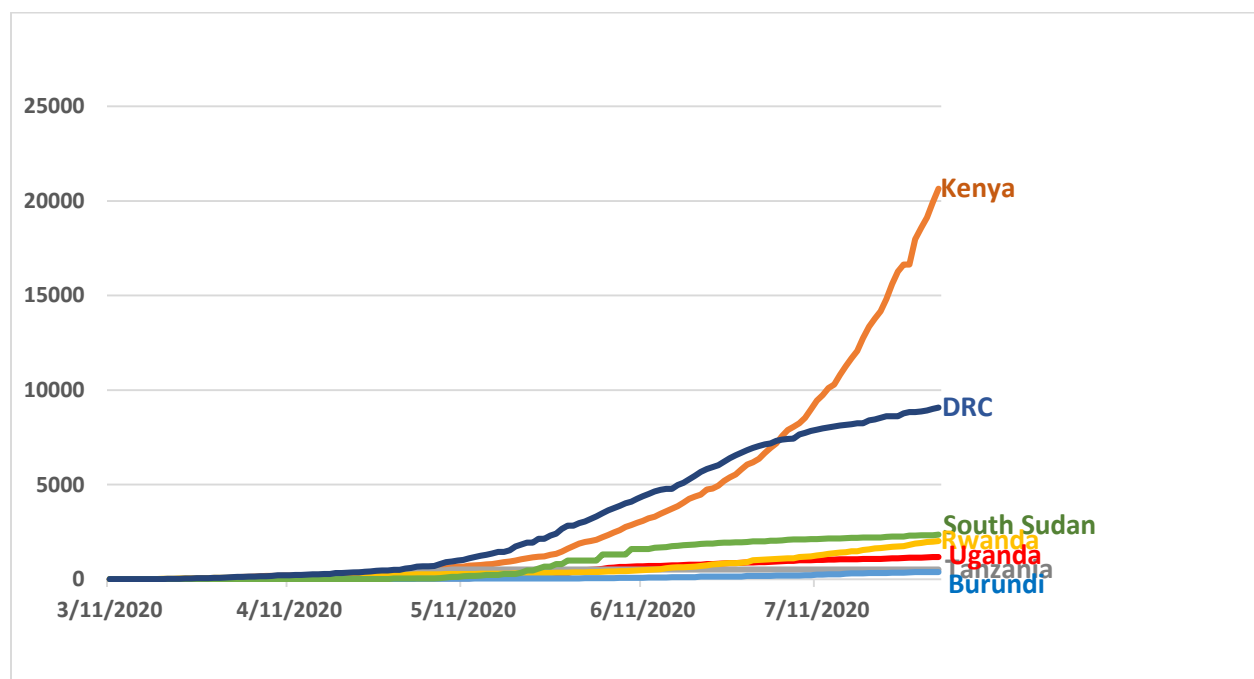




Distribution of locally transmitted cases by district of sample collection (n=491)



Comparative analysis of progression of COVID-19 pandemic in East Africa





- The surveillance pillar continues to conduct **manage alerts**; the table below presents a summary on this:

Variable	Indicator	Output
Alerts management	Incoming calls	376
	Signals not investigated at the end of previous day	19
	New signals received	353
	Total signals	372
	Signals validated for follow-up (Alerts)	273
	Alerts investigated with collection of lab sample	262

- A central team has been deployed to Mbale sub-region to set up a regional response mechanism.

CASE MANAGEMENT

- There are 116 confirmed cases that are currently admitted across districts in the country and all are in stable condition.

Isolation unit	No. of confirmed cases on admission	Discharges	Bed capacity
Entebbe Hospital	20	176	125
Masaka RRH	00	75	41
Gulu RRH	13	167	74
Lira RRH	05	60	20
Arua RRH	02	69	34
Mbale RRH	32	98	50
Jinja RRH	03	77	28
Naguru RRH	04	18	12
Mulago NRH	13	367	260



Isolation unit	No. of confirmed cases on admission	Discharges	Bed capacity
Mbarara RRH	09	29	30
Hoima RRH	01	21	16
Mubende RRH	00	22	25
Fort Portal RRH	00	05	26
Adjumani Hospital	00	01	02
Soroti RRH	04	24	45
Kabale RRH	08	34	30
Moroto RRH	00	02	30
Bombo Military Hospital	04	16	-

RISK COMMUNICATION AND SOCIAL MOBILIZATION

- The team is advocating for a production budget (voices, animation, motion graphics, comedians, translations, among others) and media airtime space for a national campaign for 6 months.
- Intensified stakeholders' involvement in Risk Communication & full participation of other MDAs.
- Strategic use of Social Media to Influence Media Discussions
- The team continues to release daily press briefs to update the general public on the COVID-19 outbreak.

LOGISTICS

- National funding requirements per pillar of the COVID-19 response:

Pillar	Requirement (1 month)	Requirement (3 months)	Requirement (6 months)
Case Management PPE	1,490,549,928	28,607,968,971	59,798,569,862
Case Management Treatment	28,113,278	539,573,378	1,127,856,263
Case Management Oxygen requirements	90,455,850,560	97,373,543,080	100,832,389,340
IPC	28,971,549,979	75,573,605,784	145,476,689,491
Surveillance including POEs	5,432,456,182	10,245,916,058	17,466,105,871
Laboratory**	54,277,882,616	162,833,647,847	325,667,295,693
TOTAL (UGX)	180,656,402,542	375,174,255,117	650,368,906,520



ICT AND INNOVATIONS

- The Uganda COVID-19 dashboard can be accessed at <https://covid19.gou.go.ug/>

3. Challenges

- Community members have become complacent on reporting alerts.
- Stock out of IPC supplies; Gowns, N95 Face Masks and sanitizers.

4. Conclusion

The Ministry of Health in collaboration with other government ministries, agencies and departments and districts continues to strengthen the COVID-19 outbreak response mechanisms.
