



Situation Update

KEY HIGHLIGHTS

- ❖ **Thirteen (13) new COVID-19 confirmed cases** have been reported in the last 24 hours bringing the cumulative total of **COVID-19 confirmed cases** in Uganda to **1,128**. Two (2) COVID-19 related deaths have been reported so far.
- ❖ **Twenty (20) non-Ugandan truck drivers** tested positive for COVID-19 and were not allowed entry into the country.
- ❖ A total of **142 confirmed cases (125 Ugandans; 16 non-Ugandans; 1 refugee)** are currently admitted across **15 health facilities** and a cumulative total of **1,140 patients (986 Ugandans; 154 non-Ugandans)** have recovered and been discharged. The new confirmed cases are in process of being evacuated to an isolation unit.
- ❖ Sixty percent (681/1,128) are **imported cases** and 40% are **locally transmitted** (447/1,128).
- ❖ A total of **1,812 laboratory samples** were tested today bringing it to a cumulative total of **262,277 samples** tested.
- ❖ A cumulative total of **14,524 contacts (1,011 still under follow up)** have been listed to date, **13,513 (93%)** of whom have completed the mandatory 14-day follow up period and been discharged from daily follow up.



Summary of COVID-19 outbreak in Uganda

Summary statistics as of 26 th July 2020 at 22:00 hrs	
Individuals under institutional quarantine today	1,829
Suspected cases	00
Probable cases	00
Total Confirmed Cases	1,128
Cumulative deaths (suspected, probable or confirmed)	02
Health facilities	02
Community	00
Confirmed cases on admission	142
Ugandans	125
Non-Ugandans and refugees	17
Cumulative number of discharged cases	1,140
Ugandans	986
Non-Ugandans	154
Runaways from isolation	02
Cumulative contacts listed	14,524
Contacts that have completed 14 days	13,513
Contacts still under follow up	1,011
Contacts followed up today	1,001 (99%)
Contacts lost to follow up	00
Specimens collected and sent to the lab today	1,937
PoE	1,340
Contacts and alerts	471
Health workers	01
Cumulative specimens collected	262,277
Number of cases with positive results today	13
Ground crossing POE	05
Contacts and alerts	08
Returnees via EIA	00
Specimens with pending results	00



2. Public Health Actions

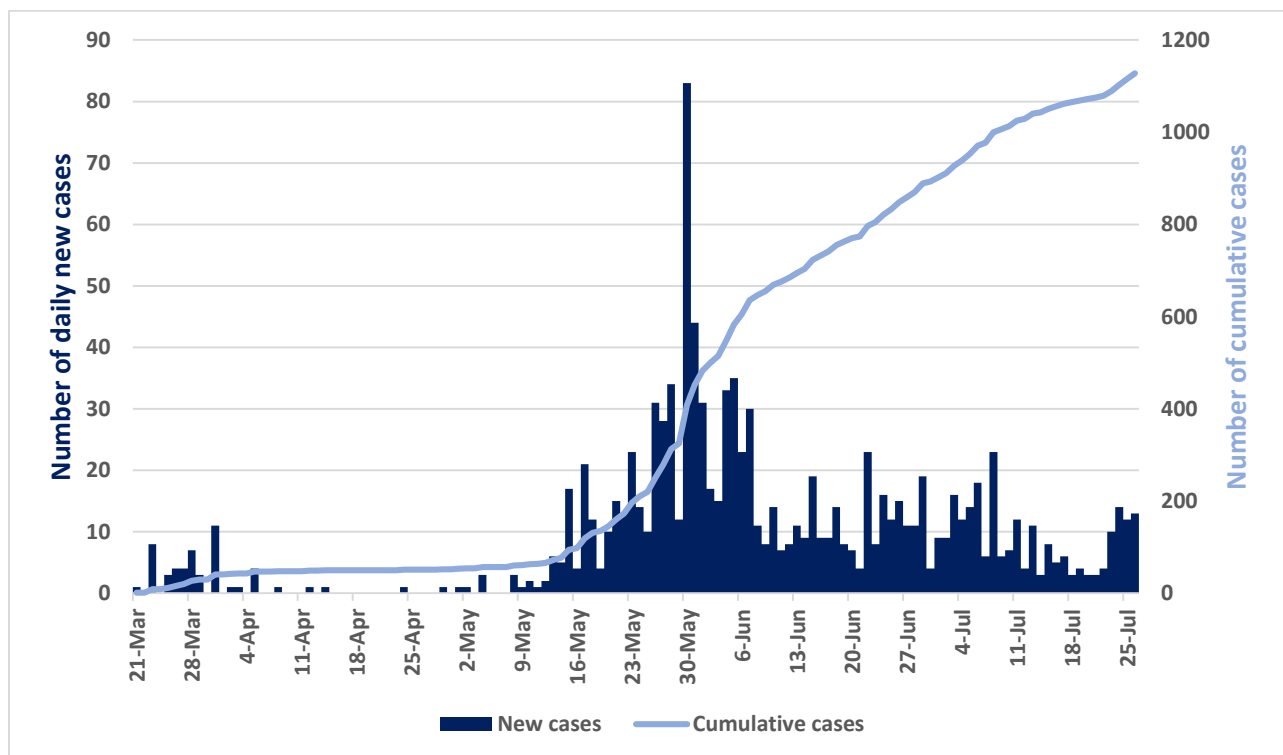
COORDINATION

- The IMT meeting chaired by the Incident Commander continues to meet twice daily.

SURVEILLANCE

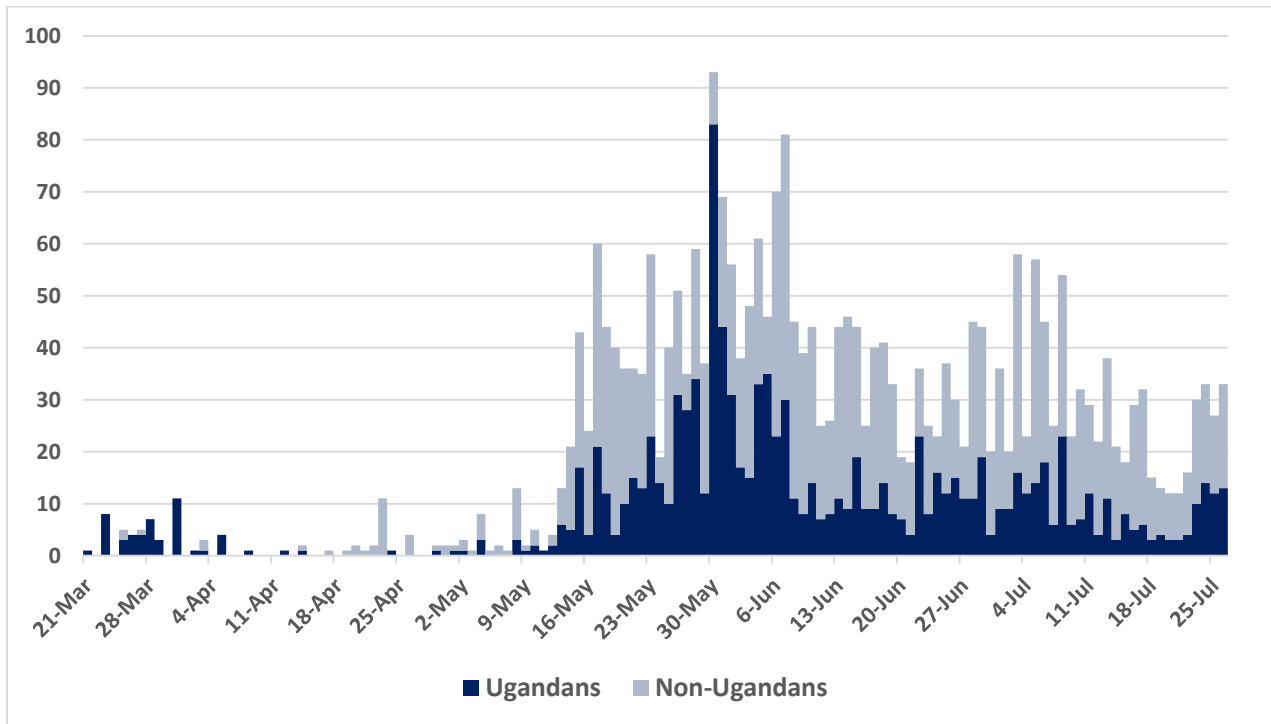
- The new confirmed cases include 5 truck drivers from Malaba (3), Mutukula (1) and Goli (1) borders and 8 community cases from Namisindwa (6), Arua (1) and Kampala (1) districts.

Epidemic curve of confirmed Ugandans (n=1,128)

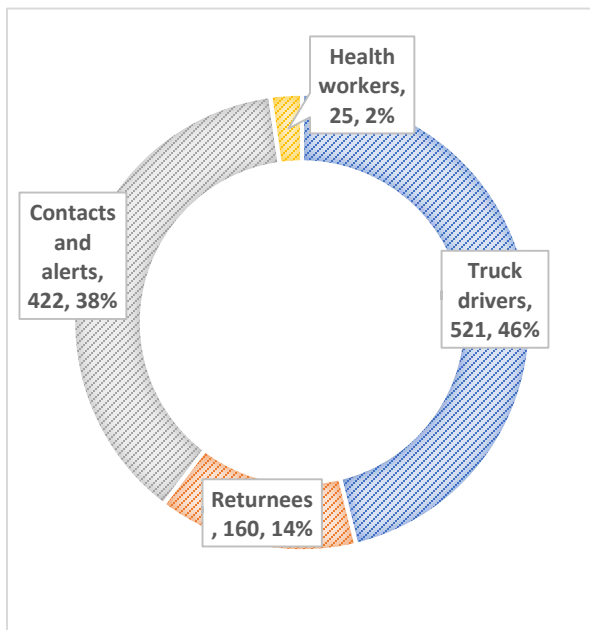




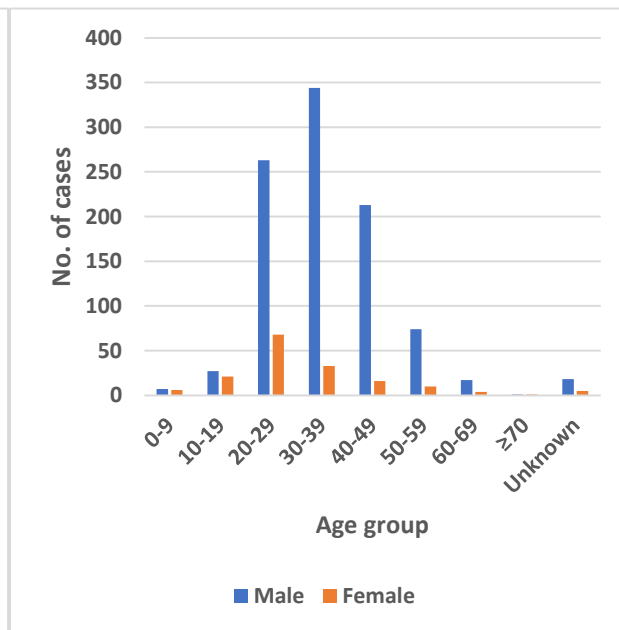
Epidemic curve of Ugandan and non-Ugandan confirmed cases (n=2,862)



Distribution of Ugandan cases

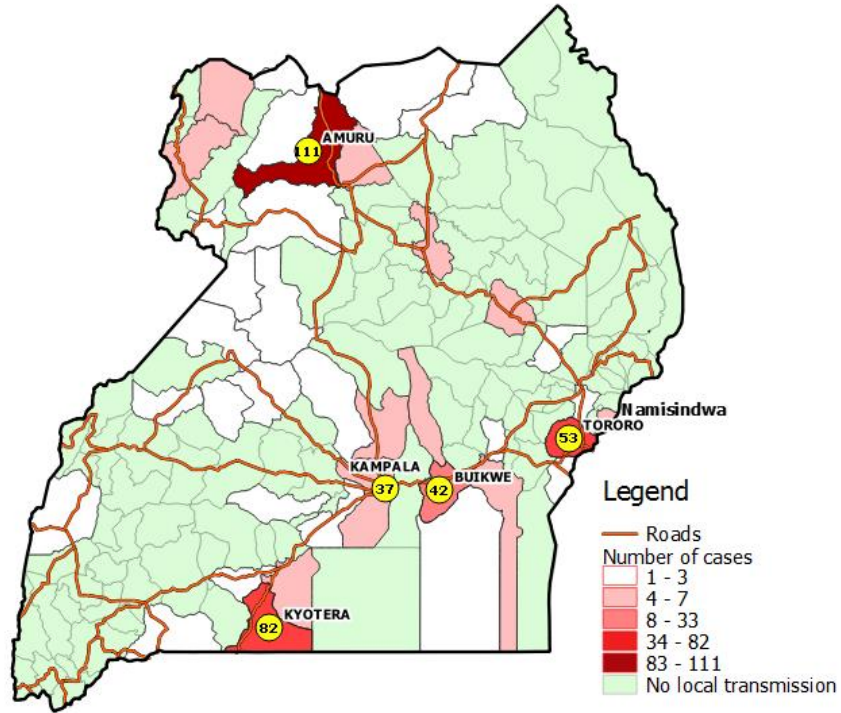


Age and sex distribution of Ugandan cases

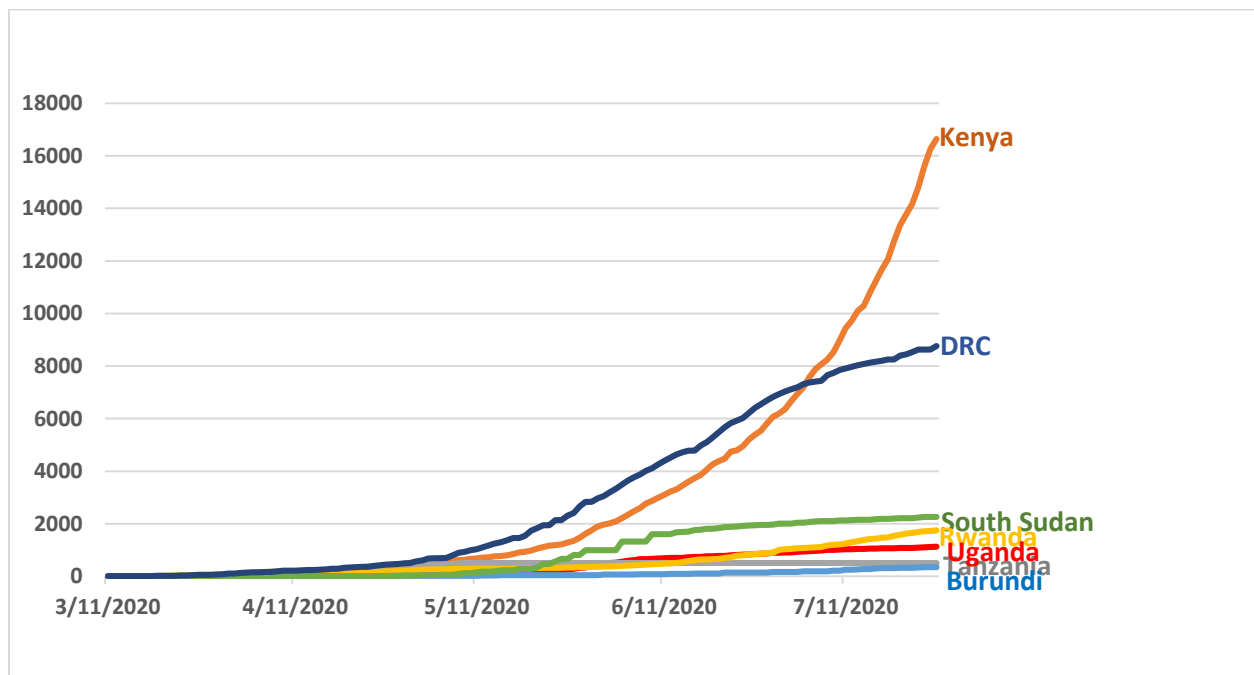




Distribution of locally transmitted cases by district of sample collection (n=447)



Comparative analysis of progression of COVID-19 pandemic in East Africa





- The surveillance pillar continues to conduct **manage alerts**; the table below presents a summary on this:

Variable	Indicator	Output
Alerts management	Incoming calls	427
	Signals not investigated at the end of previous day	19
	New signals received	270
	Total signals	289
	Signals validated for follow-up (Alerts)	295
	Alerts investigated with collection of lab sample	276

CASE MANAGEMENT

- There are 142 confirmed cases that are currently admitted across districts in the country and all are in stable condition.

Isolation unit	No. of confirmed cases on admission	Discharges	Bed capacity
Entebbe Hospital	13	162	125
Masaka RRH	00	75	41
Gulu RRH	34	139	74
Lira RRH	13	47	20
Arua RRH	04	64	34
Mbale RRH	37	68	50
Jinja RRH	01	77	28
Naguru RRH	01	17	12
Mulago NRH	10	358	260



Isolation unit	No. of confirmed cases on admission	Discharges	Bed capacity
Mbarara RRH	06	23	30
Hoima RRH	07	15	16
Mubende RRH	00	22	25
Fort Portal RRH	02	03	26
Adjumani Hospital	00	01	02
Soroti RRH	00	24	45
Kabale RRH	10	31	30
Moroto RRH	00	02	30
Bombo Military Hospital	04	12	-

RISK COMMUNICATION AND SOCIAL MOBILIZATION

- A risk communication plan for the returnees through EIA has been developed and will be presented to the IMT.
- The team continues to release daily press briefs to update the general public on the COVID-19 outbreak.

LOGISTICS

- Stock status for COVID-19 response:

Item	Month of Stock	Pipeline Month of Stock
Surgical masks	0.44	1.68
Surgical N95 respirators	0.20	2.60
Face shield	0.12	0.82
Protective goggles	0.45	5.00
Examination gloves	0.03	2.44
Open System (ABI- 7500 SARS COV-2 test) [1 test]	0.13	1.85
SARS-CoV-2 RT-PCR Kit 1.0 [96 tests]	0.31	1.45
Nasopharyngeal swab with Transport Media	0.48	1.18



ICT AND INNOVATIONS

- The Uganda COVID-19 dashboard can be accessed at <https://covid19.gou.go.ug/>

3. Challenges

- Stock out of IPC supplies; Gowns, N95 Face Masks.
- Delayed availability of transport for recovered people to resettle them back to their communities.

4. Conclusion

The Ministry of Health in collaboration with other government ministries, agencies and departments and districts continues to strengthen the COVID-19 outbreak response mechanisms.
