



Situation Update

KEY HIGHLIGHTS

- ❖ **Twelve (12) new COVID-19 confirmed cases** have been reported in the last 24 hours bringing the cumulative total of **COVID-19 confirmed cases** in Uganda to **1,115**.
- ❖ Uganda has registered her **second COVID-19 related death**.
- ❖ **Fifteen (15) non-Ugandan truck drivers** tested positive for COVID-19 and were not allowed entry into the country.
- ❖ A total of **118 confirmed cases (107 Ugandans; 10 non-Ugandans; 1 refugee)** are currently admitted across **15 health facilities** and a cumulative total of **1,137 patients (982 Ugandans; 155 non-Ugandans)** have recovered and been discharged. The new confirmed cases are in process of being evacuated to an isolation unit.
- ❖ Sixty-one percent (676/1,115) are **imported cases** and 39% are **locally transmitted** (439/1,115).
- ❖ A total of **1,937 laboratory samples** were tested today bringing it to a cumulative total of **260,465 samples** tested.
- ❖ A cumulative total of **14,508 contacts (1,066 still under follow up)** have been listed to date, **13,442 (93%)** of whom have completed the mandatory 14-day follow up period and been discharged from daily follow up.



Summary of COVID-19 outbreak in Uganda

| Summary statistics as of 25 th July 2020 at 22:00 hrs | |
|--|-------------|
| Individuals under institutional quarantine today | 1,829 |
| Suspected cases | 00 |
| Probable cases | 00 |
| Total Confirmed Cases | 1,115 |
| Cumulative deaths (suspected, probable or confirmed) | 02 |
| Health facilities | 02 |
| Community | 00 |
| Confirmed cases on admission | 118 |
| Ugandans | 107 |
| Non-Ugandans and refugees | 11 |
| Cumulative number of discharged cases | 1,137 |
| Ugandans | 982 |
| Non-Ugandans | 155 |
| Runaways from isolation | 02 |
| Cumulative contacts listed | 14,508 |
| Contacts that have completed 14 days | 13,442 |
| Contacts still under follow up | 1,066 |
| Contacts followed up today | 1,056 (99%) |
| Contacts lost to follow up | 00 |
| Specimens collected and sent to the lab today | 1,937 |
| PoE | 1,334 |
| Contacts and alerts | 602 |
| Health workers | 01 |
| Cumulative specimens collected | 260,465 |
| Number of cases with positive results today | 12 |
| Ground crossing POE | 02 |
| Contacts and alerts | 10 |
| Returnees via EIA | 00 |
| Specimens with pending results | 00 |



2. Public Health Actions

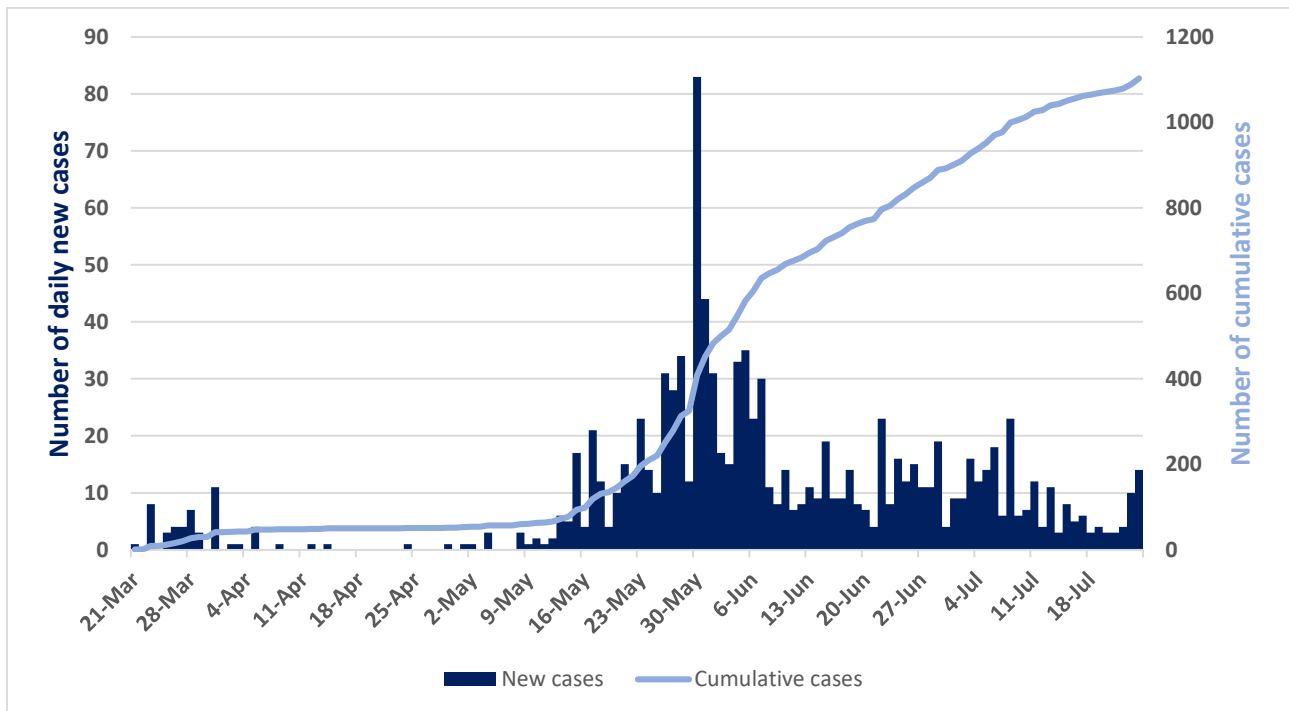
COORDINATION

- The IMT meeting chaired by the Incident Commander continues to meet twice daily.

SURVEILLANCE

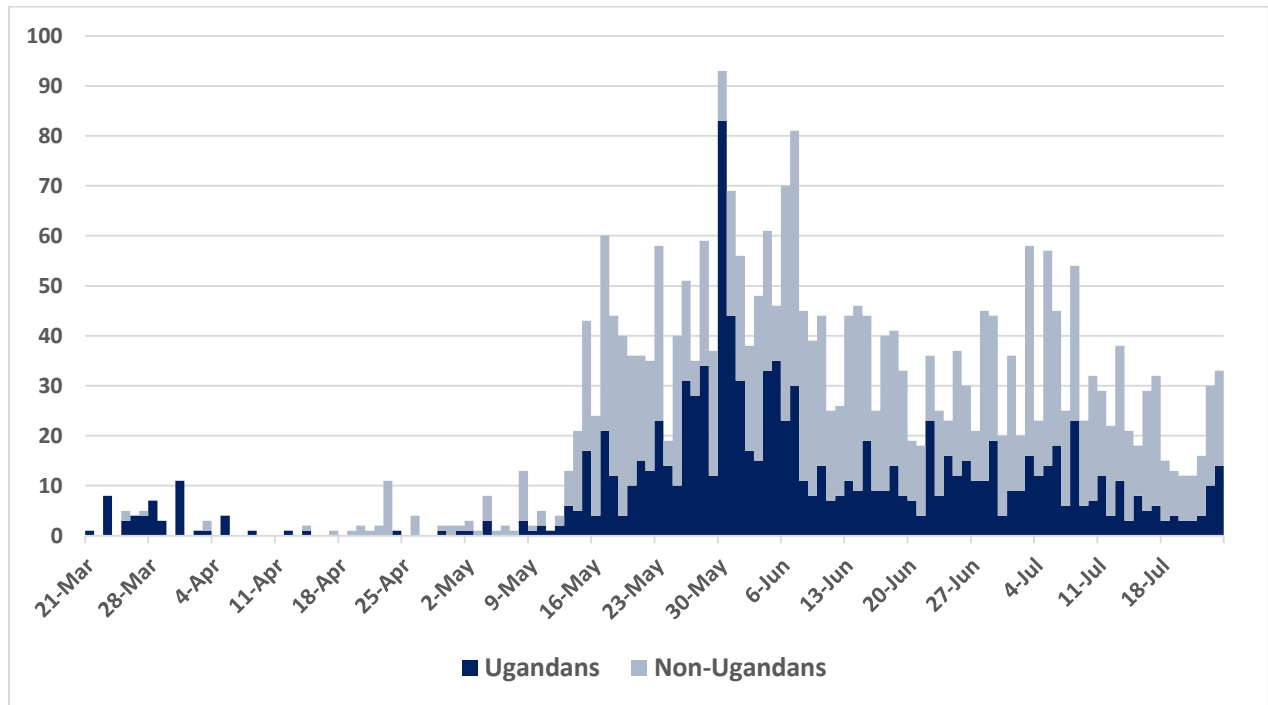
- The new confirmed cases include 1 truck driver from Mirama Hills, 1 returnee who arrived via Lwakhakha border and 10 community cases from Kampala (3), Tororo (3), Mbale (2), Amuru (1) and Isingiro (1) districts.

Epidemic curve of confirmed Ugandans (n=1,115)

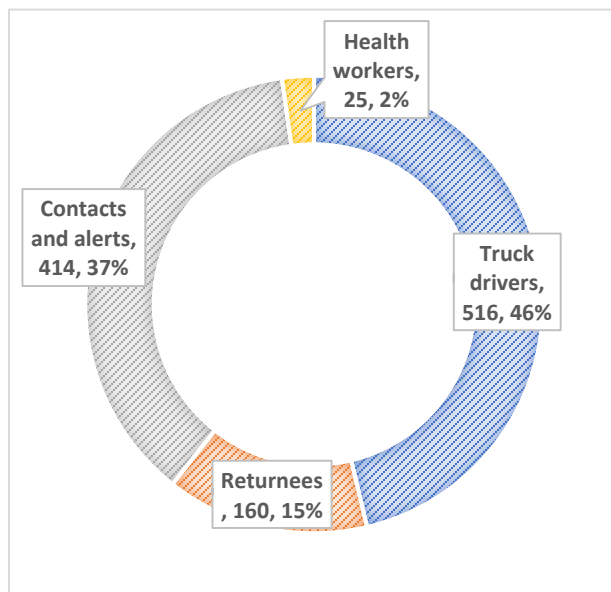




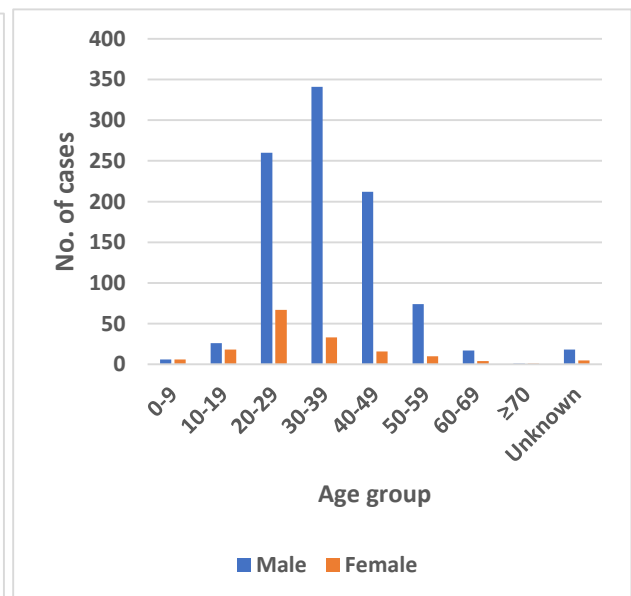
Epidemic curve of Ugandan and non-Ugandan confirmed cases (n=2,829)



Distribution of Ugandan cases

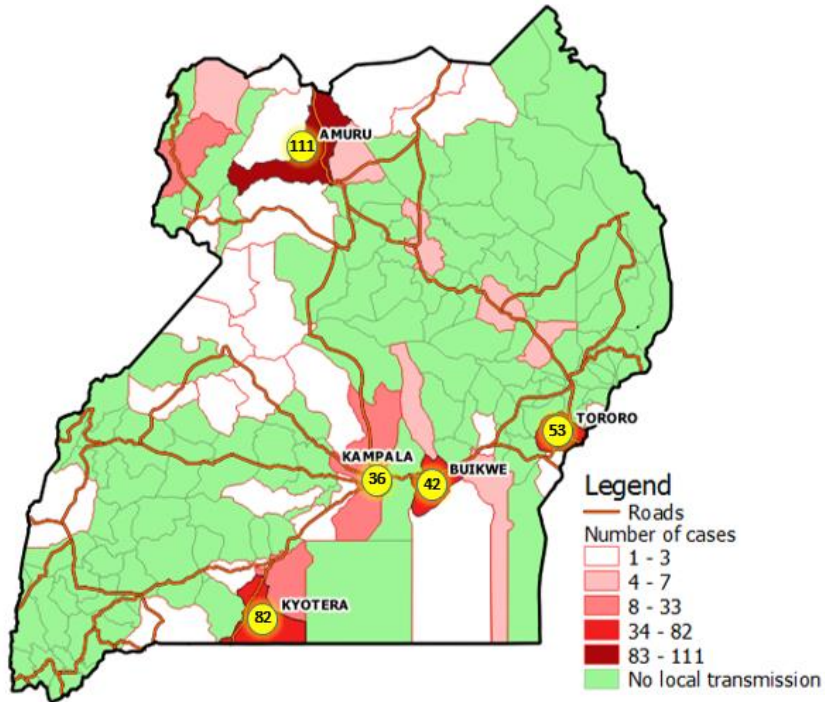


Age and sex distribution of Ugandan cases

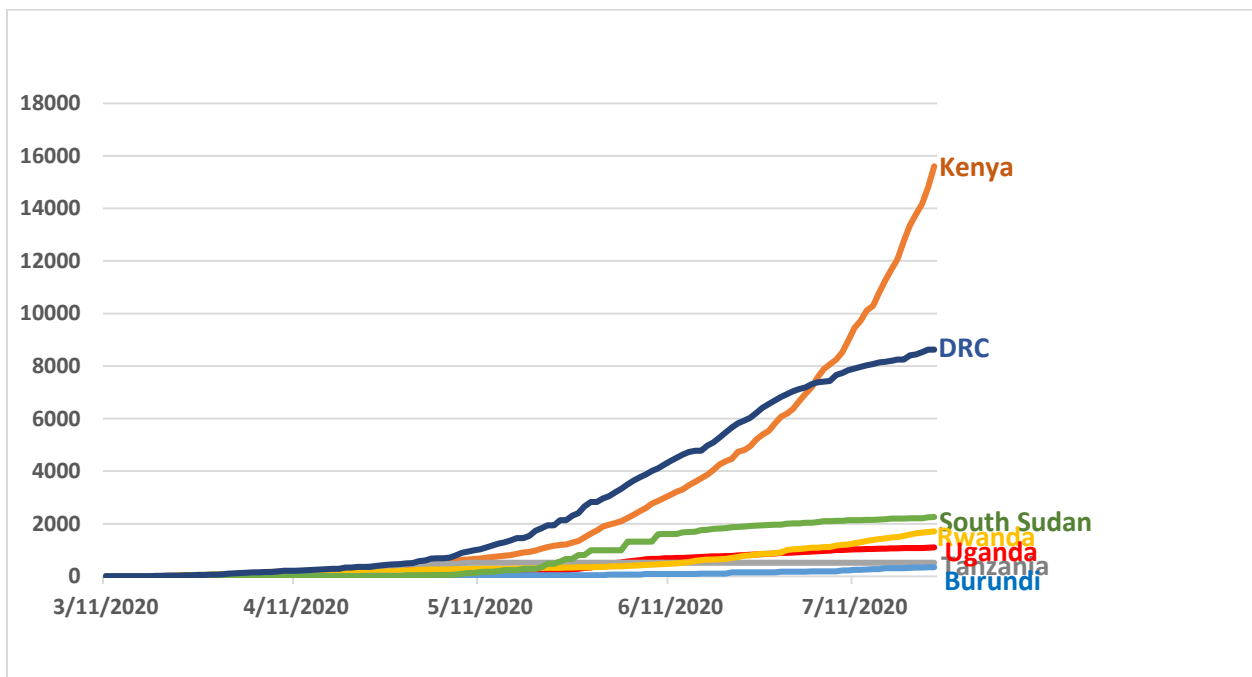




Distribution of locally transmitted cases by district of sample collection (n=439)



Comparative analysis of progression of COVID-19 pandemic in East Africa





- The surveillance pillar continues to conduct **manage alerts**; the table below presents a summary on this:

| Variable | Indicator | Output |
|--------------------------|---|--------|
| Alerts management | Incoming calls | 448 |
| | Signals not investigated at the end of previous day | 15 |
| | New signals received | 217 |
| | Total signals | 232 |
| | Signals validated for follow-up (Alerts) | 162 |
| | Alerts investigated with collection of lab sample | 156 |

CASE MANAGEMENT

- There are 118 confirmed cases that are currently admitted across districts in the country and all are in stable condition.

| Isolation unit | No. of confirmed cases on admission | Discharges | Bed capacity |
|-------------------|-------------------------------------|------------|--------------|
| Entebbe Hospital | 10 | 162 | 125 |
| Masaka RRH | 02 | 75 | 41 |
| Gulu RRH | 33 | 139 | 74 |
| Lira RRH | 13 | 47 | 20 |
| Arua RRH | 02 | 64 | 34 |
| Mbale RRH | 28 | 68 | 50 |
| Jinja RRH | 01 | 77 | 28 |
| Naguru RRH | 02 | 16 | 12 |
| Mulago NRH | 06 | 358 | 260 |
| Mbarara RRH | 04 | 25 | 30 |
| Hoima RRH | 07 | 15 | 16 |
| Mubende RRH | 00 | 22 | 25 |
| Fort Portal RRH | 02 | 03 | 26 |
| Adjumani Hospital | 00 | 01 | 02 |
| Soroti RRH | 00 | 24 | 45 |



| Isolation unit | No. of confirmed cases on admission | Discharges | Bed capacity |
|-------------------------|-------------------------------------|------------|--------------|
| Kabale RRH | 04 | 27 | 30 |
| Moroto RRH | 00 | 02 | 30 |
| Bombo Military Hospital | 04 | 12 | - |

RISK COMMUNICATION AND SOCIAL MOBILIZATION

- A risk communication plan for the returnees through EIA has been developed and will be presented to the IMT.
- The team continues to release daily press briefs to update the general public on the COVID-19 outbreak.

LOGISTICS

- Stock status for COVID-19 response:

| Item | Month of Stock | Pipeline Month of Stock |
|--|----------------|-------------------------|
| Surgical masks | 0.44 | 1.68 |
| Surgical N95 respirators | 0.20 | 2.60 |
| Face shield | 0.12 | 0.82 |
| Protective goggles | 0.45 | 5.00 |
| Examination gloves | 0.03 | 2.44 |
| Open System (ABI- 7500 SARS COV-2 test) [1 test] | 0.13 | 1.85 |
| SARS-CoV-2 RT-PCR Kit 1.0 [96 tests] | 0.31 | 1.45 |
| Nasopharyngeal swab with Transport Media | 0.48 | 1.18 |

ICT AND INNOVATIONS

- The Uganda COVID-19 dashboard can be accessed at <https://covid19.gou.go.ug/>



3. Challenges

- Stock out of IPC supplies; Gowns, N95 Face Masks.
- Delayed availability of transport for recovered people to resettle them back to their communities.

4. Conclusion

The Ministry of Health in collaboration with other government ministries, agencies and departments and districts continues to strengthen the COVID-19 outbreak response mechanisms.
