



## Situation Update

### KEY HIGHLIGHTS

- ❖ H.E the President of Uganda addressed the nation on the COVID-19 outbreak.
- ❖ **Three (3) new COVID-19 confirmed cases** have been reported in the last 24 hours bringing the cumulative total of **COVID-19 confirmed cases** in Uganda to **1,075**. No COVID-19 related death has been registered to date.
- ❖ **Nine (9) non-Ugandan truck drivers** tested positive for COVID-19 and were not allowed entry into the country.
- ❖ A total of **137 confirmed cases (114 Ugandans; 22 non-Ugandans; 1 refugee)** are currently admitted across **15 health facilities** and a cumulative total of **1,095 patients (958 Ugandans; 137 non-Ugandans)** have recovered and been discharged.
- ❖ Sixty-one percent (656/1,075) are **imported cases** and 39% are **locally transmitted** (419/1,075).
- ❖ A total of **2,098 laboratory samples** were tested today bringing it to a cumulative total of **252,127 samples** tested.
- ❖ A cumulative total of **14,132 contacts (1,123 still under follow up)** have been listed to date, **13,009 (92%)** of whom have completed the mandatory 14-day follow up period and been discharged from daily follow up.
- ❖ A **repatriation flight** carrying **96 returnees** from Ethiopia arrived via Entebbe International Airport and all are under mandatory quarantine.



## Summary of COVID-19 outbreak in Uganda

Summary statistics as of 21 <sup>st</sup> July 2020 at 22:00 hrs	
Individuals under institutional quarantine today	1,575
<b>Suspected cases</b>	00
<b>Probable cases</b>	00
<b>Total Confirmed Cases</b>	1,075
Cumulative deaths (suspected, probable or confirmed)	00
Health facilities	00
Community	00
Deaths among confirmed cases	00
<b>Confirmed cases on admission</b>	137
Ugandans	114
Non-Ugandans and refugees	23
<b>Cumulative number of discharged cases</b>	1,095
Ugandans	958
Non-Ugandans	137
Runaways from isolation	00
Cumulative <b>contacts</b> listed	14,132
<b>Contacts</b> that have completed 14 days	13,009
Number of contacts still under follow up	1,123
<b>Contacts</b> followed up today	1,113 (99%)
Cumulative contacts with symptoms	460
<b>Contacts lost to follow up</b>	00
Specimens collected and sent to the lab today	2,098
PoE	1,632
Contacts and alerts	466
Health workers	00
Cumulative specimens collected	252,127
Number of cases with positive results today	03
<b>Ground crossing POE</b>	03
<b>Contacts and alerts</b>	00
<b>Returnees via EIA</b>	00
Specimens with pending results	00



## 2. Public Health Actions

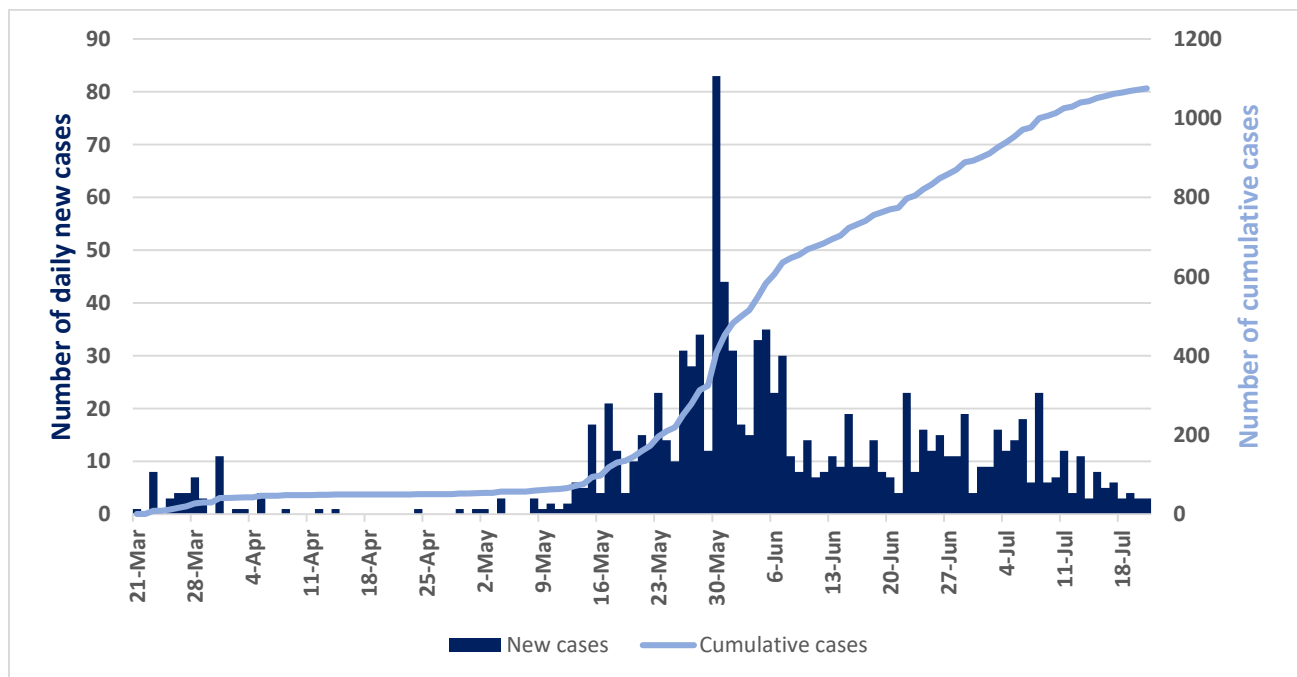
### COORDINATION

- The IMT meeting chaired by the Incident Commander continues to meet twice daily.

### SURVEILLANCE

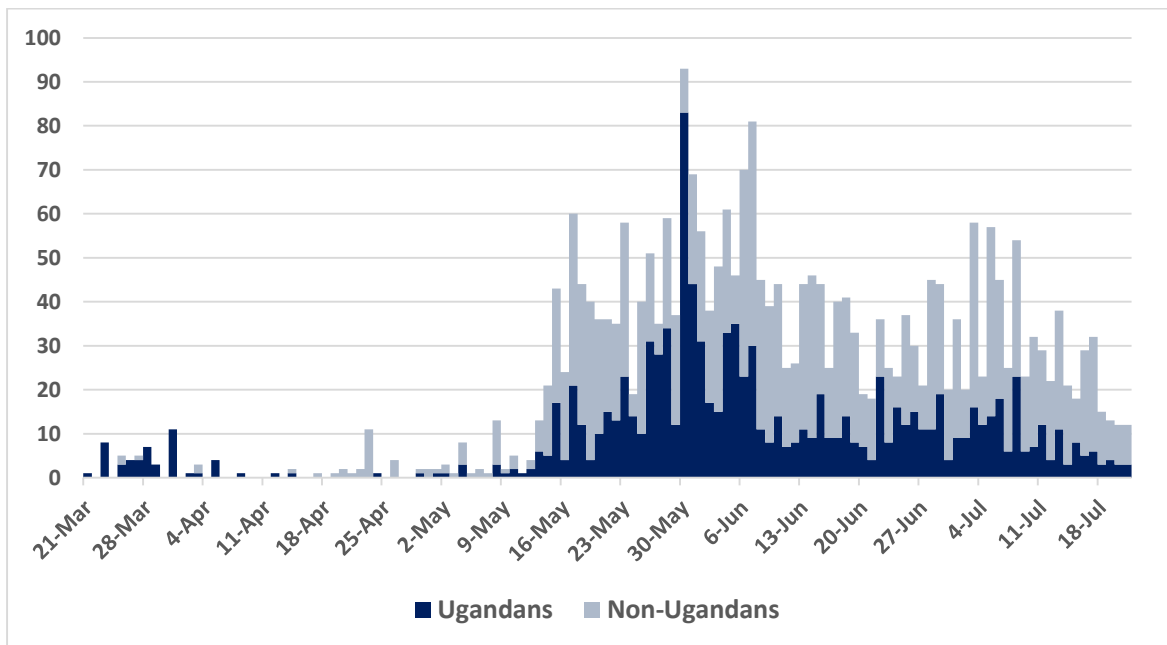
- The new confirmed cases include 1 truck driver from Bunagana border and 2 illegal returnees from South Sudan (1) and Kenya (1); both of whom were under institutional quarantine at the time of sample collection.

Epidemic curve of confirmed Ugandans (n=1,075)

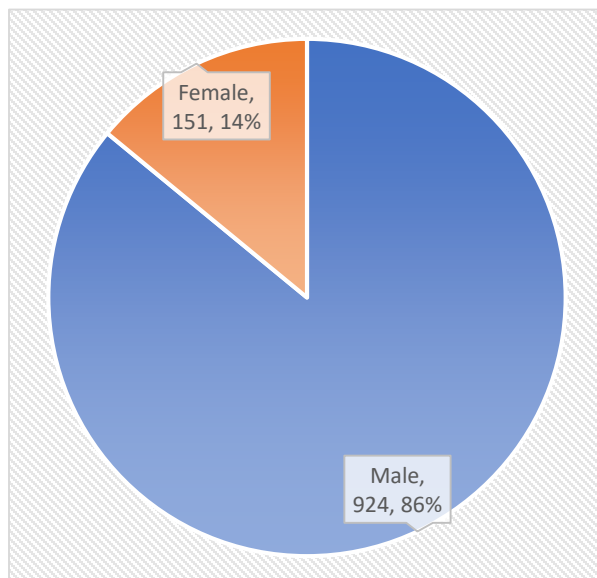




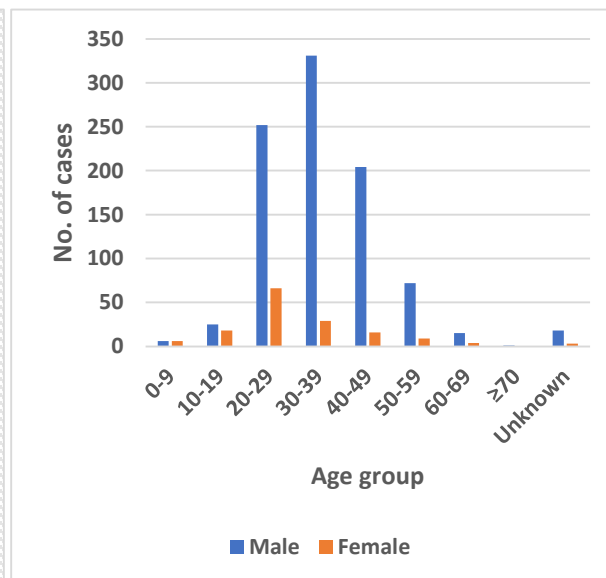
Epidemic curve of Ugandan and non-Ugandan confirmed cases (n=2,723)



Distribution of Ugandan cases

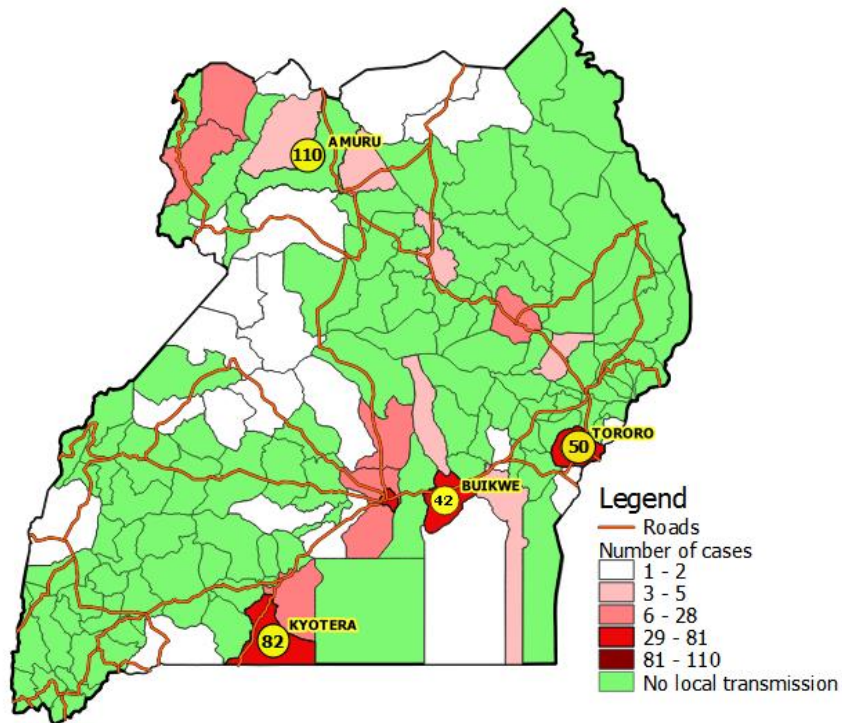


Age and sex distribution of Ugandan cases

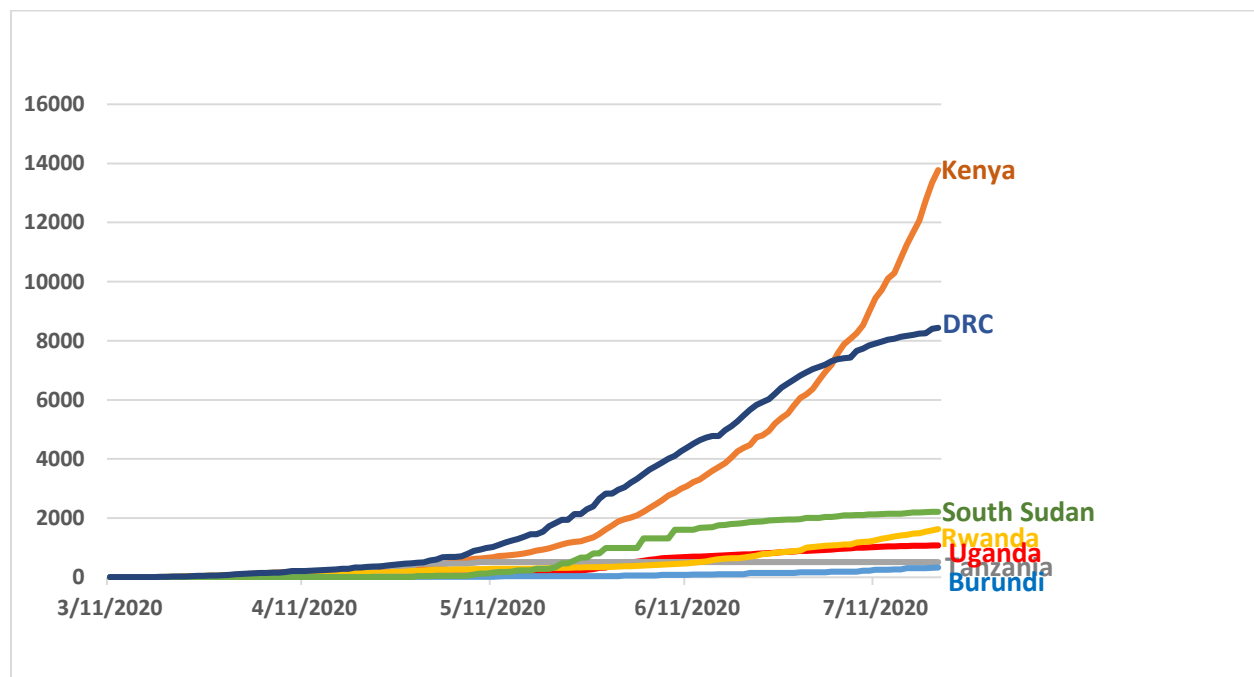




### Distribution of locally transmitted cases by district of sample collection (n=419)



### Comparative analysis of progression of COVID-19 pandemic in East Africa





- The surveillance pillar continues to conduct **manage alerts**; the table below presents a summary on this:

Variable	Indicator	Output
<b>Alerts management</b>	Incoming calls	475
	Signals not investigated at the end of previous day	09
	New signals received	255
	Total signals	304
	Signals validated for follow-up (Alerts)	218
	Alerts investigated with collection of lab sample	113

## CASE MANAGEMENT

- There are 137 confirmed cases that are currently admitted across districts in the country and all are in stable condition.

Isolation unit	No. of confirmed cases on admission	Discharges	Bed capacity
Entebbe Hospital	07	162	125
Masaka RRH	02	75	41
Gulu RRH	36	126	74
Lira RRH	13	43	20
Arua RRH	04	62	34
Mbale RRH	25	68	50
Jinja RRH	05	72	28
Naguru RRH	02	16	12
Mulago NRH	06	357	260



Mbarara RRH	07	21	30
Hoima RRH	07	15	16
Mubende RRH	00	22	25
Fort Portal RRH	02	03	26
Adjumani Hospital	00	01	02
Soroti RRH	00	24	45
Kabale RRH	16	15	30
Moroto RRH	00	02	30
Bombo Military Hospital	05	11	-

## RISK COMMUNICATION AND SOCIAL MOBILIZATION

- A risk communication plan for the returnees through EIA has been developed and will be presented to the IMT.
- The team continues to release daily press briefs to update the general public on the COVID-19 outbreak.

## LOGISTICS

- Stock status for COVID-19 response:

Item	Month of Stock	Pipeline Month of Stock
Surgical masks	0.44	1.68
Surgical N95 respirators	0.20	2.60
Face shield	0.12	0.82
Protective goggles	0.45	5.00
Examination gloves	0.03	2.44
Open System (ABI- 7500 SARS COV-2 test) [1 test]	0.13	1.85
SARS-CoV-2 RT-PCR Kit 1.0 [96 tests]	0.31	1.45
Nasopharyngeal swab with Transport Media	0.48	1.18



## ICT AND INNOVATIONS

- The Uganda COVID-19 dashboard can be accessed at <https://covid19.gou.go.ug/>

### 3. Challenges

- Stock out of IPC supplies; Gowns, N95 Face Masks.
- Delayed availability of transport for recovered people to resettle them back to their communities.

### 4. Conclusion

The Ministry of Health in collaboration with other government ministries, agencies and departments and districts continues to strengthen the COVID-19 outbreak response mechanisms.