



Situation Update

KEY HIGHLIGHTS

- ❖ **Three (3) new COVID-19 confirmed cases** have been reported in the last 24 hours bringing the cumulative total of **COVID-19 confirmed cases** in Uganda to **1,065**. No COVID-19 related death has been registered to date.
- ❖ **Twelve (12) non-Ugandan truck drivers** tested positive for COVID-19 and were not allowed entry into the country.
- ❖ A total of **136 confirmed cases (115 Ugandans; 19 non-Ugandans; 2 refugees)** are currently admitted across **15 health facilities** and a cumulative total of **1,071 patients** have recovered and been discharged.
- ❖ Sixty-one percent (647/1,065) are **imported cases** and 39% are **locally transmitted** (418/1,065).
- ❖ A total of **3,045 laboratory samples** were tested today bringing it to a cumulative total of **245,450 samples** tested.
- ❖ A cumulative total of **14,010 contacts (1,415 still under follow up)** have been listed to date, **12,595 (90%)** of whom have completed the mandatory 14-day follow up period and been discharged from daily follow up.
- ❖ **Two repatriation flights** carrying **509 Ugandan citizens and residents** from Qatar and USA arrived and all are under mandatory quarantine.



Summary of COVID-19 outbreak in Uganda

Summary statistics as of 18 th July 2020 at 22:00 hrs	
Individuals under institutional quarantine today	1,587
Suspected cases	00
Probable cases	00
Total Confirmed Cases	1,065
Cumulative deaths (suspected, probable or confirmed)	00
Health facilities	00
Community	00
Deaths among confirmed cases	00
Confirmed cases on admission	136
Cumulative number of discharged cases	1,071
Runaways from isolation	00
Cumulative contacts listed	14,010
Contacts that have completed 14 days	12,595
Number of contacts still under follow up	1,415
Contacts followed up today	1,345 (95%)
Cumulative contacts with symptoms	460
Contacts lost to follow up	00
Specimens collected and sent to the lab today	3,045
PoE	1,771
Contacts and alerts	1,273
Health workers	01
Cumulative specimens collected	245,450
Number of cases with positive results today	03
Ground crossing POE	02
Contacts and alerts	01
Returnees via EIA	00
Specimens with pending results	00



2. Public Health Actions

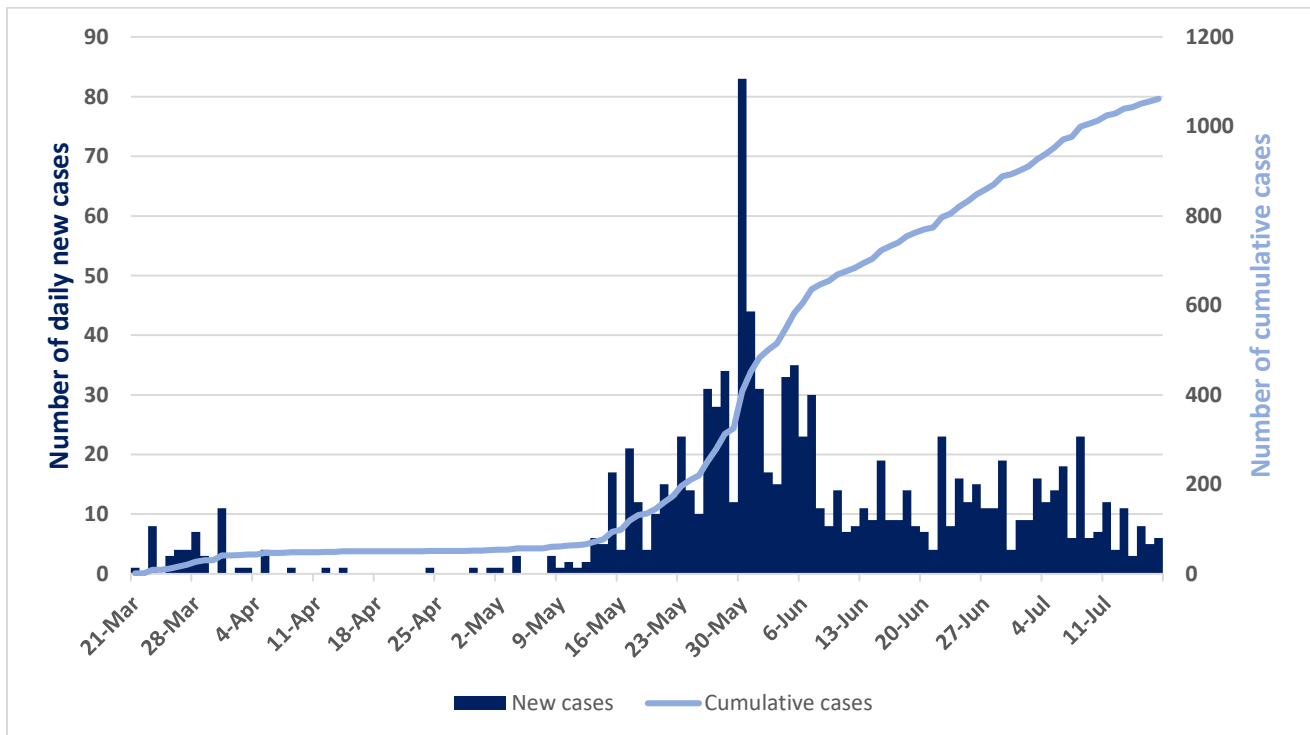
COORDINATION

- The IMT meeting chaired by the Incident Commander continues to meet twice daily.

SURVEILLANCE

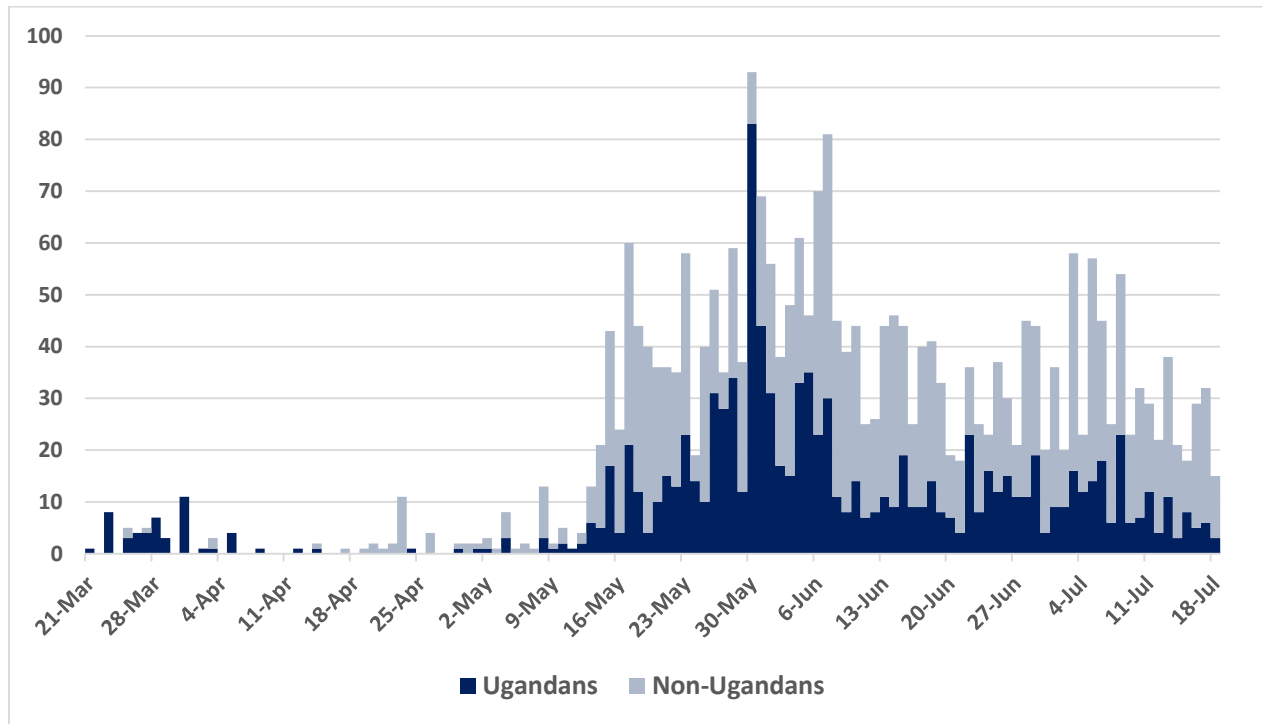
- The new confirmed cases include 1 truck driver who arrived via Mutukula border, 1 returnee from South Sudan via Elegu border and 1 community case from Gulu district.

Epidemic curve of confirmed Ugandans (n=1,065)

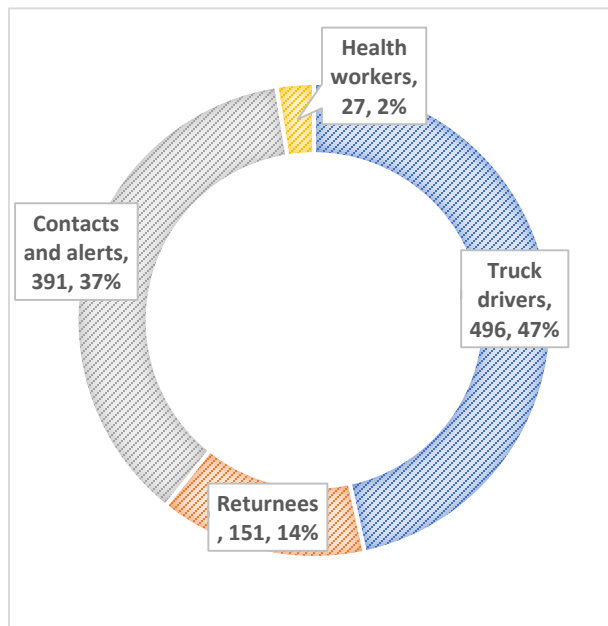




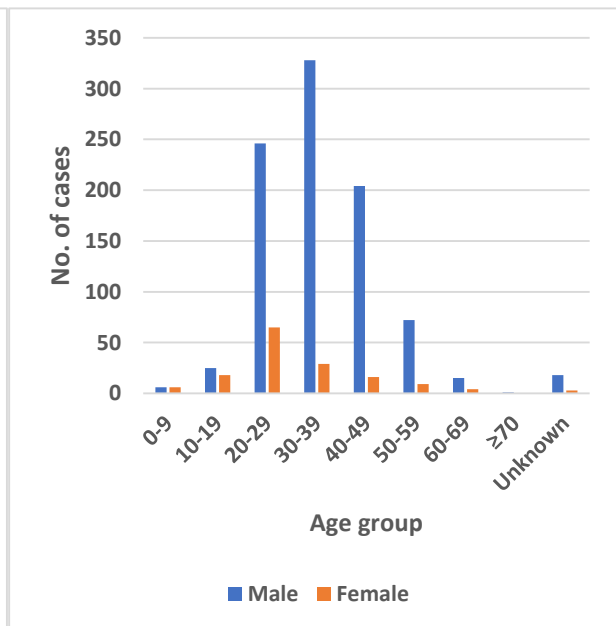
Epidemic curve of Ugandan and non-Ugandan confirmed cases (n=2,686)



Distribution of Ugandan cases

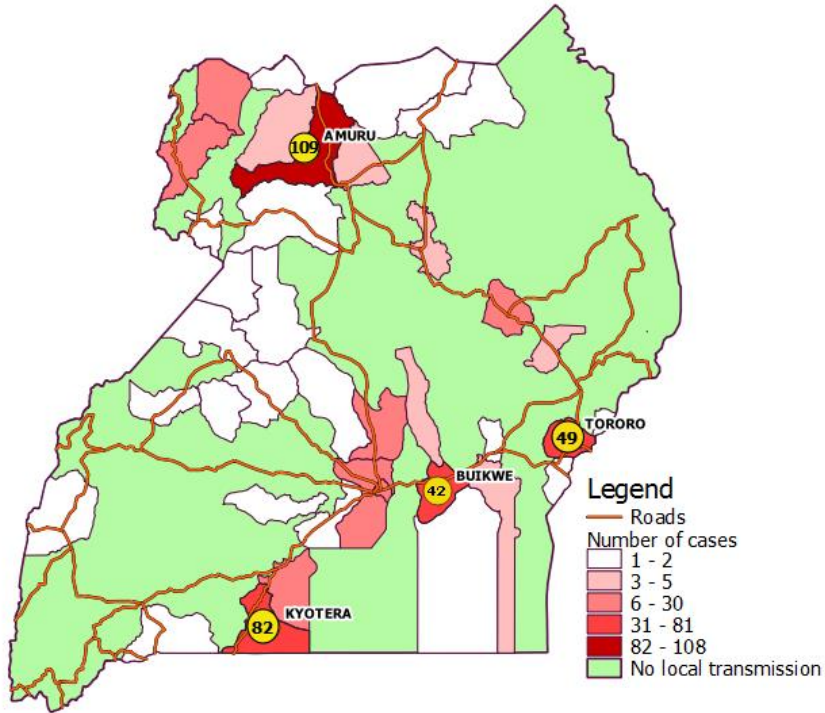


Age and sex distribution of Ugandan cases

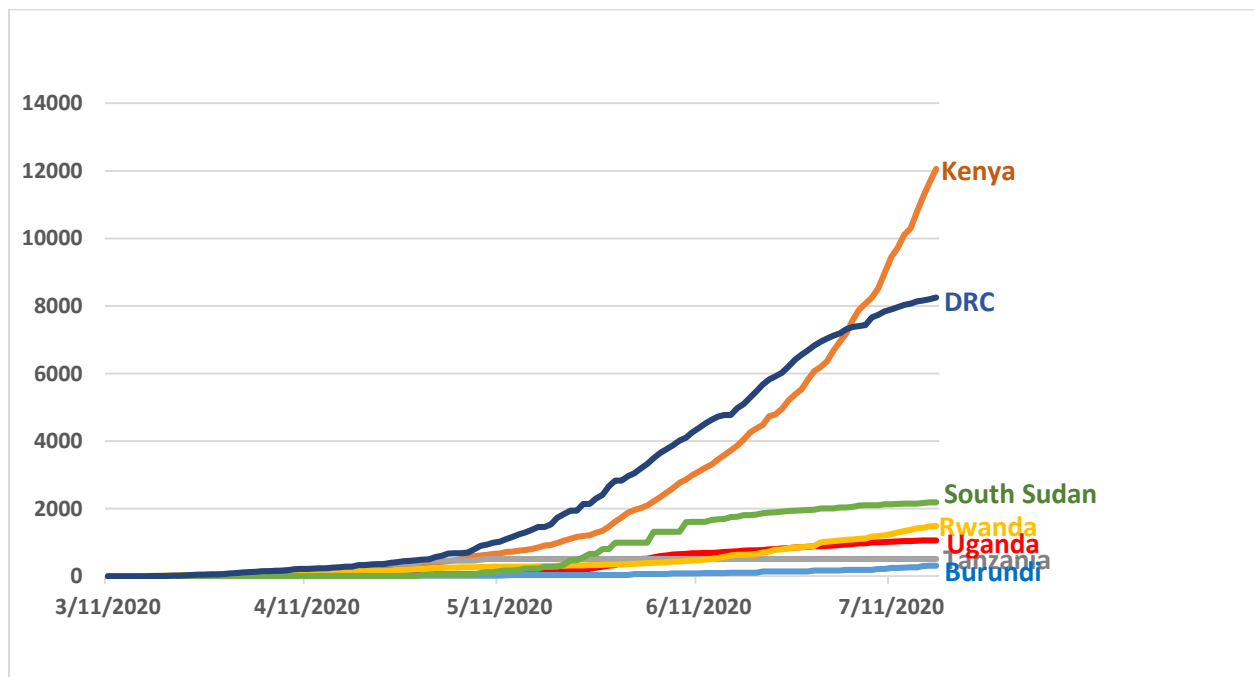




Distribution of locally transmitted cases by district of sample collection (n=417)



Comparative analysis of progression of COVID-19 pandemic in East Africa





- The surveillance pillar continues to conduct **manage alerts**; the table below presents a summary on this:

Variable	Indicator	Output
Alerts management	Incoming calls	409
	Signals not investigated at the end of previous day	10
	New signals received	196
	Total signals	206
	Signals validated for follow-up (Alerts)	161
	Alerts investigated with collection of lab sample	118

CASE MANAGEMENT

- There are 136 confirmed cases that are currently admitted across districts in the country and all are in stable condition.

Isolation unit	No. of confirmed cases on admission	Discharges	Bed capacity
Entebbe Hospital	06	160	125
Masaka RRH	02	75	41
Gulu RRH	36	126	74
Lira RRH	13	43	20
Arua RRH	03	62	34
Mbale RRH	23	57	50
Jinja RRH	06	71	28
Naguru RRH	05	12	12
Mulago NRH	02	357	260
Mbarara RRH	06	21	30
Hoima RRH	07	15	16
Mubende RRH	00	22	25
Fort Portal RRH	02	03	26
Adjumani Hospital	00	01	02
Soroti RRH	01	23	45



Isolation unit	No. of confirmed cases on admission	Discharges	Bed capacity
Kabale RRH	16	15	30
Moroto RRH	00	02	30
Bombo Military Hospital	08	08	-

RISK COMMUNICATION AND SOCIAL MOBILIZATION

- A risk communication plan for the returnees through EIA has been developed and will be presented to the IMT.
- The team continues to release daily press briefs to update the general public on the COVID-19 outbreak.

LOGISTICS

- Stock status for COVID-19 response:

Item	Month of Stock	Pipeline Month of Stock
Surgical masks	0.44	1.68
Surgical N95 respirators	0.20	2.60
Face shield	0.12	0.82
Protective goggles	0.45	5.00
Examination gloves	0.03	2.44
Open System (ABI- 7500 SARS COV-2 test) [1 test]	0.13	1.85
SARS-CoV-2 RT-PCR Kit 1.0 [96 tests]	0.31	1.45
Nasopharyngeal swab with Transport Media	0.48	1.18

ICT AND INNOVATIONS

- The Uganda COVID-19 dashboard can be accessed at <https://covid19.gou.go.ug/>



3. Challenges

- Stock out of IPC supplies; Gowns, N95 Face Masks.
- CTUs are understaffed, with too much work shared among nurses and doctors.
- Isolation units lack beds and mattresses, beddings for those with expanded admission capacity.
- Need to increase psychosocial support to both the patients and staff to address the ever-increasing stigma and trauma associated with COVID-19.
- Delayed availability of transport for recovered people to resettle them back to their communities.

4. Conclusion

The Ministry of Health in collaboration with other government ministries, agencies and departments and districts continues to strengthen the COVID-19 outbreak response mechanisms.
