



## Situation Update

### KEY HIGHLIGHTS

- ❖ **Eight (8) new COVID-19 confirmed cases** have been reported in the last 24 hours bringing the cumulative total of **COVID-19 confirmed cases** in Uganda to **805**. No COVID-19 related death has been registered to date.
- ❖ A total of **218 confirmed cases** are currently admitted across **15 health facilities** and a cumulative total of **717 patients** have recovered and been discharged.
- ❖ Sixty-four percent (512/805) are **imported cases** and 36% are **locally transmitted** (293/805).
- ❖ A total of **2,196 laboratory samples** were tested today bringing it to a cumulative total of **176,491 samples** tested.
- ❖ A cumulative total of **9,308 contacts (492 still under follow up)** have been listed to date, **8,816 (95%)** of whom have completed the mandatory 14-day follow up period and been discharged from daily follow up.
- ❖ A total of **41 high-risk passengers** from Sudan (27) and Netherlands (14) arrived via Entebbe Airport and are all under institutional quarantine. This brings the total number of people under institutional quarantine to **1,306 in 66 sites across 51 districts**.



## Summary of COVID-19 outbreak in Uganda

Summary statistics as of 23 <sup>rd</sup> June 2020 at 22:00 hrs	
Individuals under institutional quarantine today	1,306
<b>Suspected cases</b>	00
<b>Probable cases</b>	00
<b>Total Confirmed Cases</b>	805
Cumulative deaths (suspected, probable or confirmed)	00
Health facilities	00
Community	00
Deaths among confirmed cases	00
<b>Confirmed cases on admission</b>	217
<b>Cumulative number of discharged cases</b>	717
Runaways from isolation	00
Cumulative <b>contacts</b> listed	9,308
<b>Contacts</b> that have completed 14 days	8,816
Number of contacts still under follow up	492
<b>Contacts</b> followed up today	489 (199%)
Specimens collected and sent to the lab today	2,196
PoE	1,521
Contacts and alerts	675
Health workers	00
Cumulative specimens collected	176,491
Number of cases with positive results today	08
<b>PoE samples</b>	06
<b>Contacts and alerts</b>	02
<b>Health workers</b>	00
Specimens with pending results	00



## 2. Public Health Actions

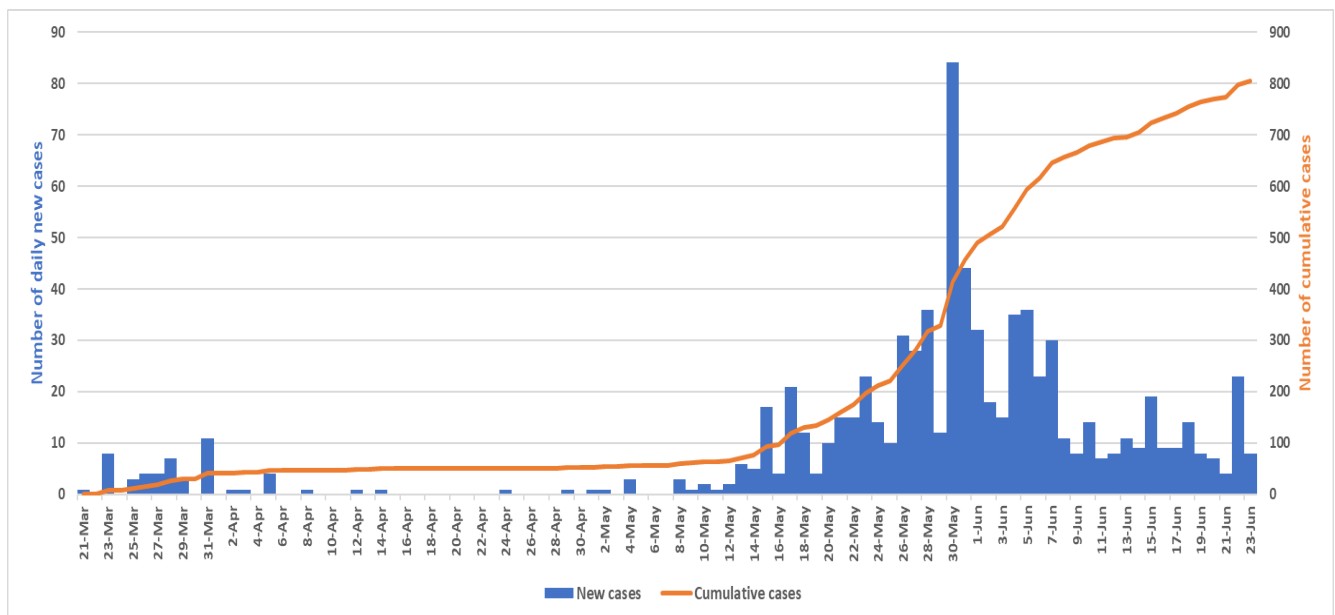
### COORDINATION

- The weekly strategic meeting chaired by the Hon. Minister of Health was held.
- The IMT meeting chaired by the Incident Commander continues to meet twice daily.

### SURVEILLANCE

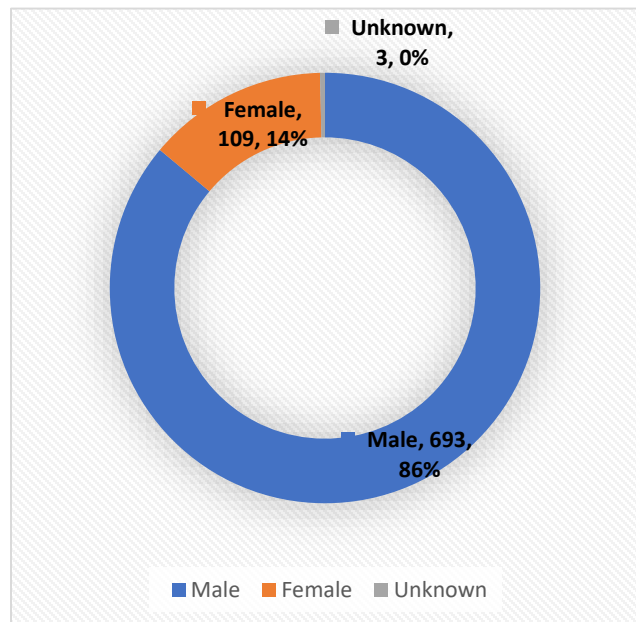
- A total of 805 confirmed cases have been line listed; of these, 512 are imported and 293 are locally transmitted.
- The new confirmed cases were reported from Mutukula (3), Elegu (2) and Malaba (1) borders; 2 community cases were reported from Amuru (1) and Kyotera (1) districts.

Trend of COVID-19 cases by date of lab confirmation

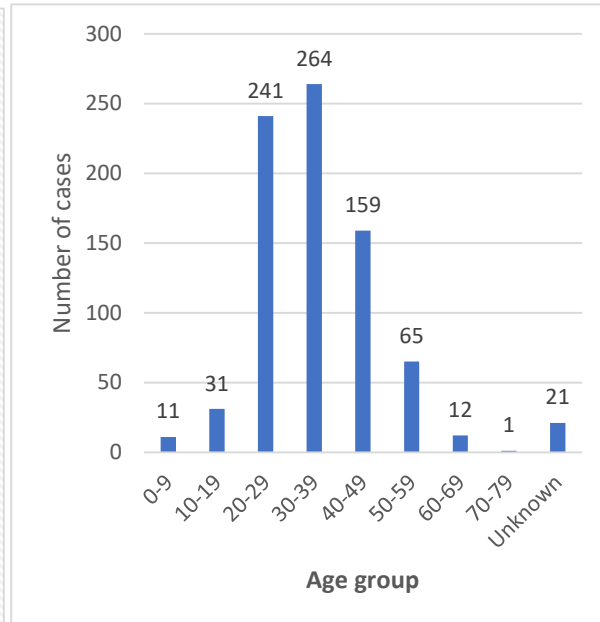




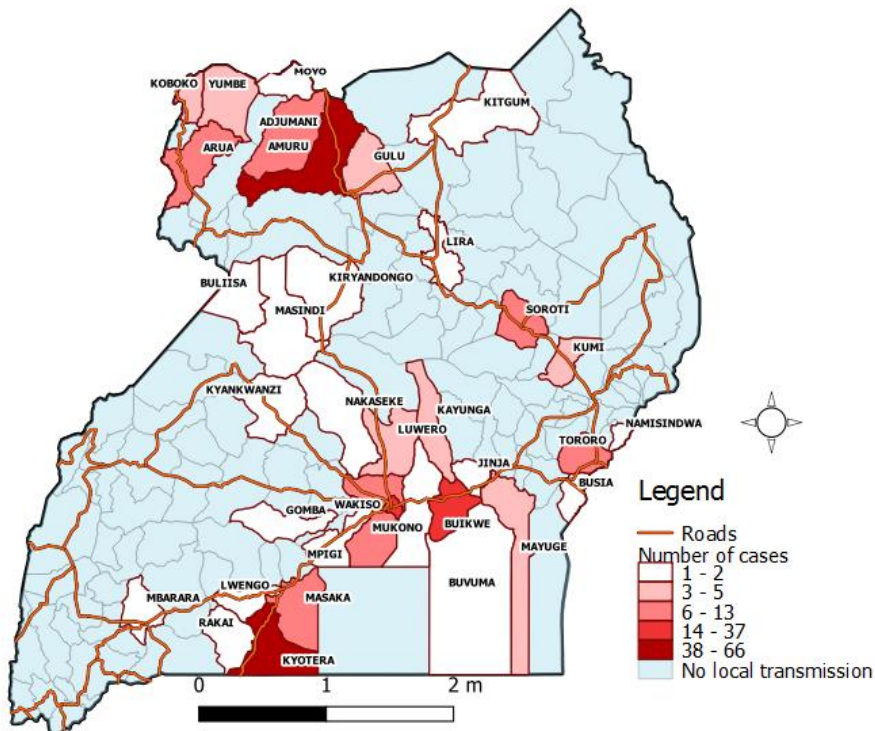
Gender distribution of confirmed cases



Age distribution of confirmed cases

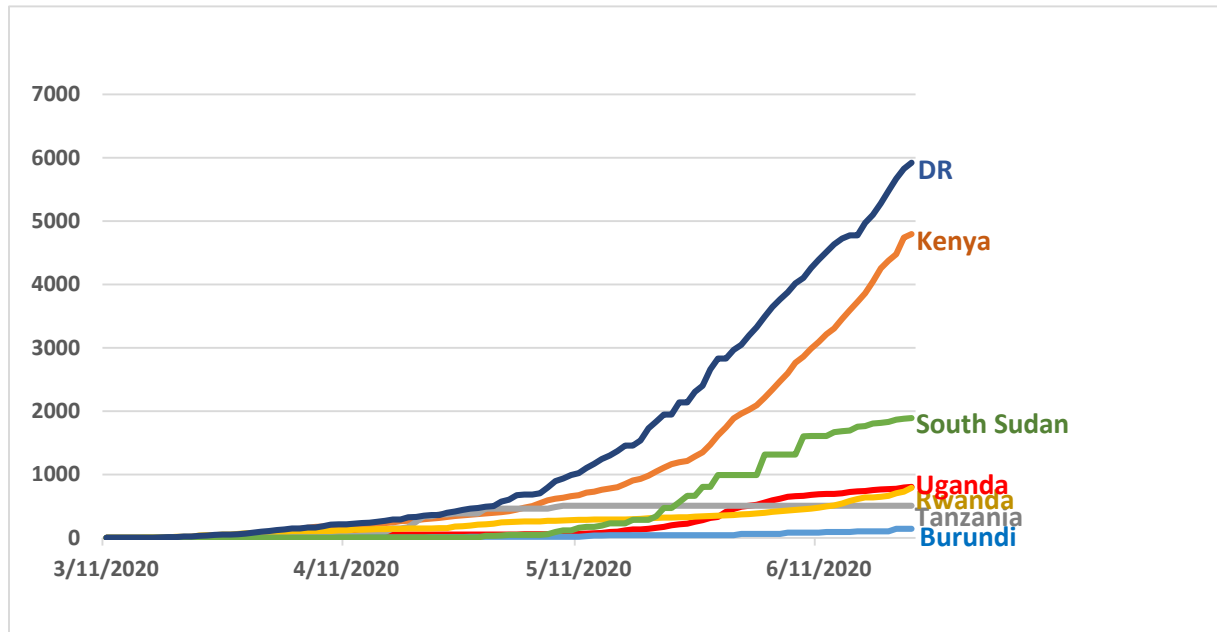


Distribution of locally transmitted cases by district of sample collection





### Comparative analysis of progression of COVID-19 pandemic in East Africa



- The surveillance pillar continues to conduct **contact tracing** and **management of alerts**. The table below presents a summary on this:

Variable	Indicator	Output
<b>Contact tracing</b>	Cumulative number of contacts traced	9,308
	Total contacts under follow up today	492
	% of follow up	99%
	Contacts lost to follow up	00
	Cumulative contacts with symptoms	449
<b>Alerts management</b>	Incoming calls	741
	Signals not investigated at the end of previous day	08
	New signals received	148
	Total signals	156
	Signals validated for follow-up (Alerts)	155
	Signals pending verification	00
	Alerts investigated with collection of lab sample	136



## LABORATORY

- Number of samples tested: 2,196
- PoE samples: 1,521
- Contacts and alerts: 67
- Cumulative number of samples tested: 176,491

## CASE MANAGEMENT

- There are 217 confirmed cases that are currently admitted across districts in the country and all are in stable clinical condition.

Isolation unit	No. of confirmed cases on admission	Discharges	Bed capacity
Entebbe Hospital	05	154	125
Masaka RRH	28	41	41
Gulu RRH	40	79	74
Lira RRH	04	22	20
Arua RRH	17	37	34
Mbale RRH	30	10	40
Jinja RRH	19	32	28
Naguru RRH	00	12	12
Mulago NRH	52	272	260
Mbarara RRH	05	09	30
Hoima RRH	06	09	16
Mubende RRH	00	22	25
Fort Portal RRH	01	01	26
Adjumani Hospital	00	01	02
Soroti RRH	04	13	45
Kabale RRH	07	01	30
Moroto RRH	00	02	30



## RISK COMMUNICATION AND SOCIAL MOBILIZATION

- Messages integrating COVID-19 and reproductive health have been produced.
- A meeting between District Health Educators from the 40 high-risk districts was held to discuss mechanisms of COVID-19 risk communication.
- The team continues to release daily press briefs to update the general public on the COVID-19 outbreak.

## LOGISTICS

- Status of procurements for COVID-19 response:

Funder	Items being Procured	Procuring Agent	Funds	Expected Delivery Date	Remarks
	Test Kits	MOH	Total UGX 16b 13.8 bn Kits 2.2 bn Sample collection and transportation	30/07/2020	At Contracting Phase Contracts Cleared by SG <ul style="list-style-type: none"> <li>- Mobile lab 9.9 bn RealStar</li> <li>- ABI 1.8 bn for UVRI</li> <li>- 2.3 bn Cobas for CPHL</li> </ul>
<b>Islamic Development Bank</b>	PPEs, Lab Test kits, Blood collection and testing reagents, Disinfection consumables, Biohazardous waste management	NMS	\$ 13.7 million reduced from \$ 20.2 million	4 weeks from contract signing	Procurement Initiated Evaluation of bid is ongoing \$ 925,000 to be reprogrammed to Test Kits
<b>GAVI</b>	Test Kits	WHO (1million)  UNICEF (2.1 million)	\$1 million WHO \$2.1 million UNICEF	Deliveries will be staggered through June, July and August	Funds have been reprogrammed for test kits.  27,072 tests (Cobas-Roche platform) being procured with Gavi funds.  Balance of the Gavi funds channeled through UNICEF (USD 2.1 million) will be used to secure additional quantities of the two types of tests where UNICEF is



Funder	Items being Procured	Procuring Agent	Funds	Expected Delivery Date	Remarks
					the lead agency (Thermo Fisher and Roche-Cobas)
UNICEF	6,000 COBAS Roche	UNICEF		Delivery by the end of the June	
Global Fund	Test Kits and PPEs	PPM	\$18.8 million (\$ 5.7 M for PPEs \$ 5.5 M for test kits \$1.2 M for lab equipment)	Estimated Date of Delivery 15th September	

## ICT AND INNOVATIONS

- The Uganda COVID-19 dashboard can be accessed at <https://covid19.gou.go.ug/>

### 3. Challenges

- Lack of adequate PPE at lower health facilities.
- Installation of the Intensive Care Unit at Gulu RRH has not yet been done by the MoH team of Engineers.
- Most isolation units lack additional logistics like mattresses, beds, bed sheets, facilitation for personnel in isolation centers and food for those in isolation.

### 4. Conclusion

The Ministry of Health in collaboration with other government ministries, agencies and departments and districts continues to strengthen the COVID-19 outbreak response mechanisms.