



Situation Update

KEY HIGHLIGHTS

- ❖ **Eight (8) new COVID-19 confirmed cases** have been reported in the last 24 hours bringing the cumulative total of **COVID-19 confirmed cases** in Uganda to **763**. No COVID-19 related death has been registered to date.
- ❖ A total of **318 confirmed cases** (**Ugandans: 263; Non-Ugandan nationals: 55**) are currently admitted across **15 health facilities** and a cumulative total of **492 patients** have recovered and been discharged.
- ❖ Sixty-five percent (496/763) are **imported cases** and 35% are **locally transmitted** (267/763).
- ❖ A total of **1,850 laboratory samples** were tested today bringing it to a cumulative total of **165,629 samples** tested.
- ❖ A cumulative total of **9,289 contacts (1,194 still under follow up)** have been listed to date, **8,095 (87%)** of whom have completed the mandatory 14-day follow up period and been discharged from daily follow up.
- ❖ A total of **1,415 high-risk individuals** are under institutional quarantine in 68 sites across 53 districts in the country.



Summary of COVID-19 outbreak in Uganda

The Republic of Uganda

Ministry of Health

COVID-19 Sitrep #123



Summary statistics as of 19th June 2020 at 22:00 hrs

Individuals under institutional quarantine today	1,415
Suspected cases	00
Probable cases	00
Total Confirmed Cases	763
Cumulative deaths (suspected, probable or confirmed)	00
Health facilities	00
Community	00
Deaths among confirmed cases	00
Confirmed cases on admission	318
Ugandans	263
Non-Ugandan nationals	55
Cumulative number of discharged cases	492
Runaways from isolation	00
Cumulative contacts listed	9,289
Contacts that have completed 14 days	8,095
Number of contacts still under follow up	1,194
Contacts followed up today	1,161 (97%)
Specimens collected and sent to the lab today	1,850
PoE	1,154
Contacts and alerts	696
Health workers	00
Cumulative specimens collected	165,629
Number of cases with positive results today	08
PoE samples	05
Contacts and alerts	03
Health workers	00
Specimens with pending results	00



2. Public Health Actions

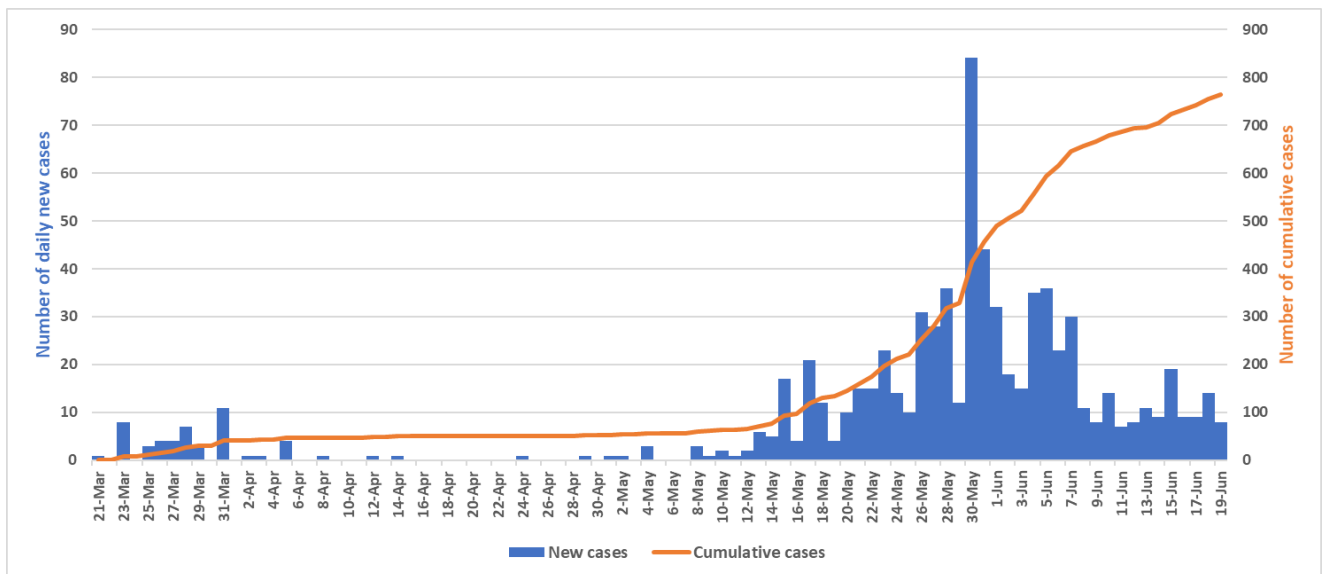
COORDINATION

- The IMT meeting chaired by the Incident Commander continues to meet twice daily.

SURVEILLANCE

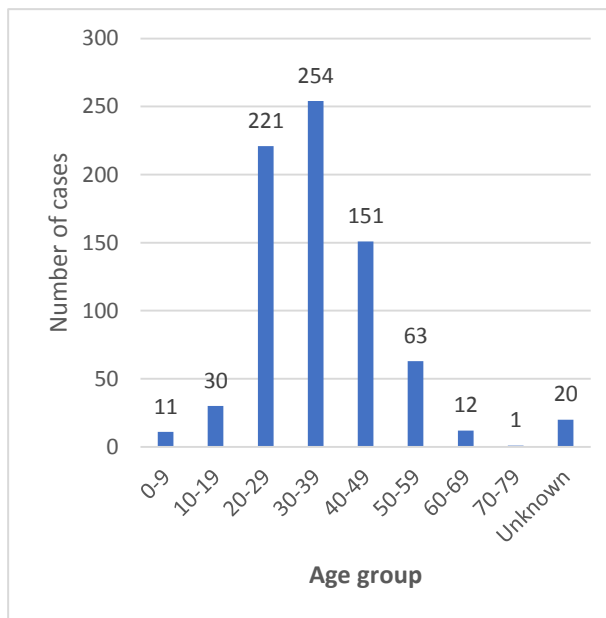
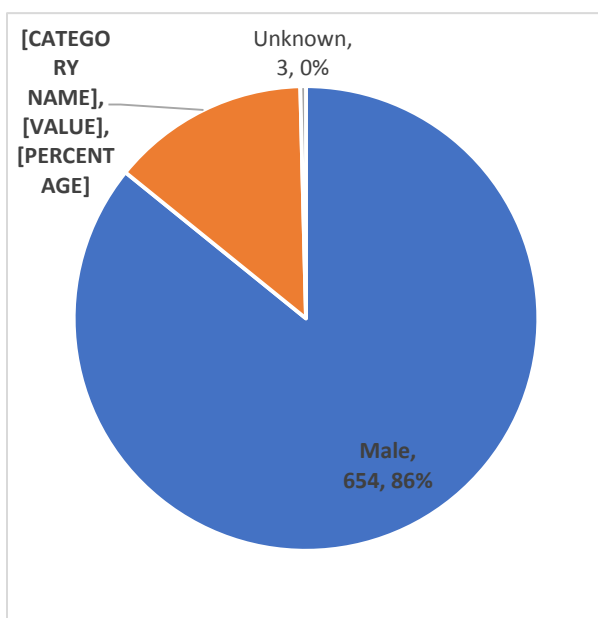
- A total of 763 confirmed cases have been line listed; of these, 496 are imported and 267 are locally transmitted.
- The new confirmed cases were reported from Elegu (3), Malaba (1) and Busia (1) borders and from Kyotera district (3).

Trend of COVID-19 cases by date of lab confirmation

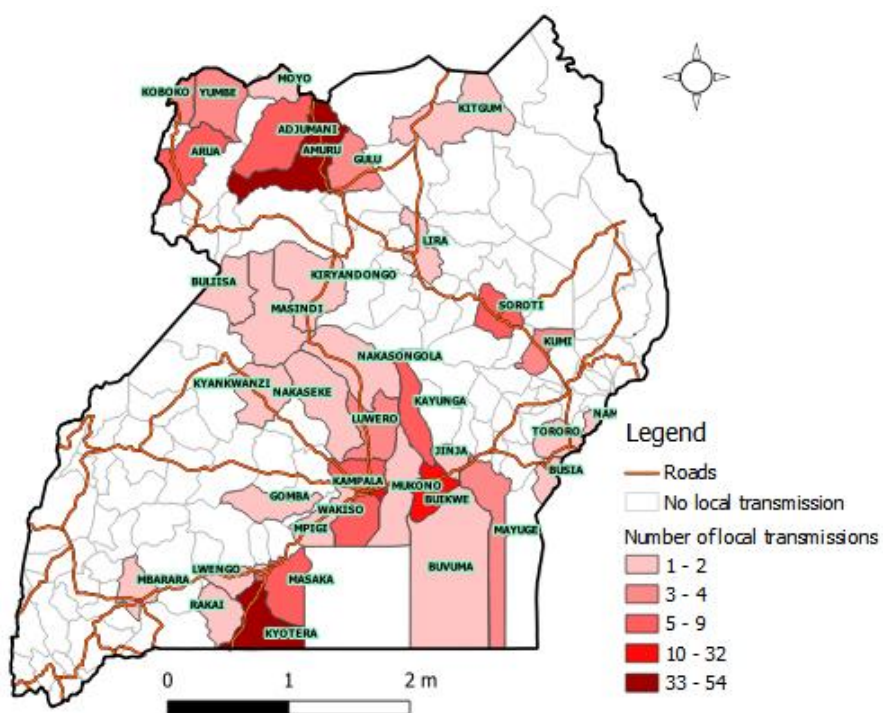


Gender distribution of confirmed cases

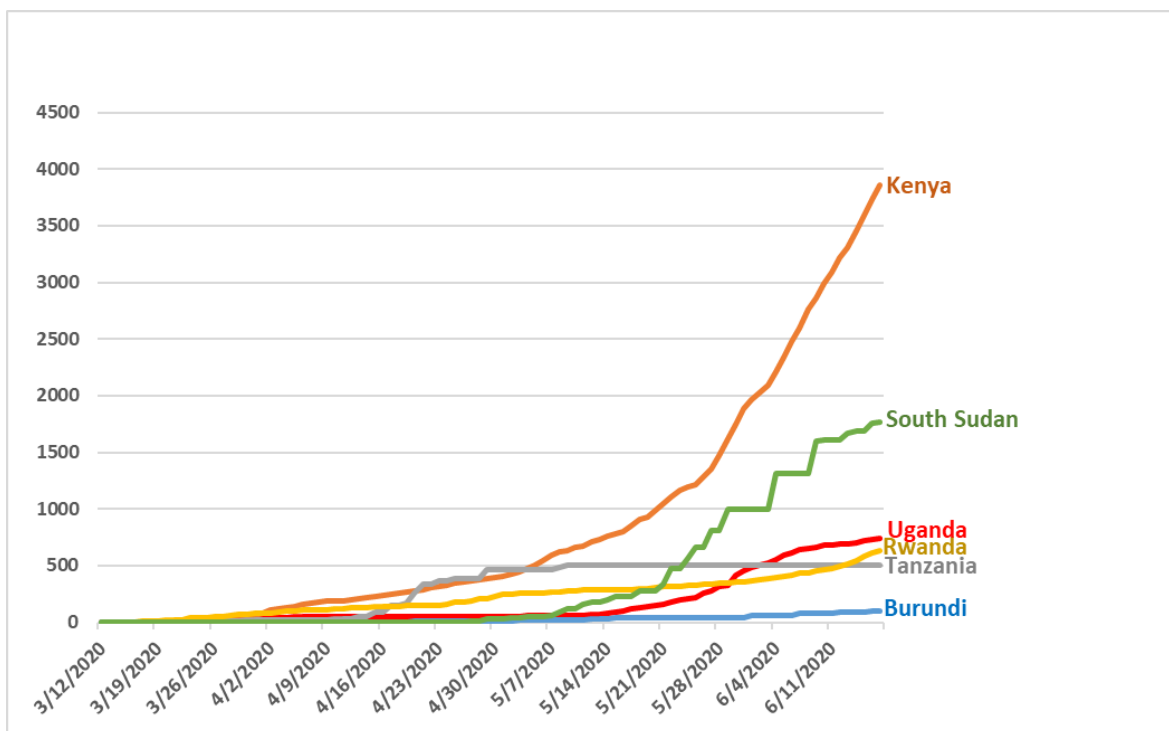
Age distribution of confirmed cases



Distribution of locally transmitted cases by district of sample collection



Comparative analysis of progression of COVID-19 pandemic in East Africa



- The surveillance pillar continues to conduct **contact tracing** and **management of alerts**. The table below presents a summary on this:

Variable	Indicator	Output
----------	-----------	--------



Contact tracing	Cumulative number of contacts traced	9,289
	Total contacts under follow up today	1,194
	% of follow up	97%
	Contacts lost to follow up	00
	Cumulative contacts with symptoms	449
Alerts management	Incoming calls	626
	Signals not investigated at the end of previous day	00
	New signals received	211
	Total signals	211
	Signals validated for follow-up (Alerts)	211
	Signals pending verification	04

LABORATORY

- Number of samples tested: 1,850
- PoE samples: 1,154
- Contacts and alerts: 696
- Cumulative number of samples tested: 165,629

CASE MANAGEMENT

- There are 318 confirmed cases that are currently admitted across districts in the country and all are in stable clinical condition.

Isolation unit	No. of confirmed cases on admission	Discharges	Bed capacity
Entebbe Hospital	18	114	125
Masaka RRH	31	26	41
Gulu RRH	38	71	74
Lira RRH	01	21	20
Arua RRH	20	31	34
Mbale RRH	17	10	40
Jinja RRH	24	27	28
Naguru RRH	00	12	12
Mulago NRH	146	132	260



Mbarara RRH	04	09	30
Hoima RRH	06	09	16
Mubende RRH	05	16	25
Fort Portal RRH	00	01	26
Adjumani Hospital	00	01	02
Soroti RRH	03	11	45
Kabale RRH	03	01	30
Moroto RRH	02	00	30

RISK COMMUNICATION AND SOCIAL MOBILIZATION

- Messages integrating COVID-19 and reproductive health have been produced.
- A meeting between District Health Educators from the 40 high-risk districts was held to discuss mechanisms of COVID-19 risk communication.
- The team continues to release daily press briefs to update the general public on the COVID-19 outbreak.

LOGISTICS

- Stock status for COVID-19 response:

Item	Month of Stock	Pipeline Month of Stock
Surgical masks	0.57	2.73
Surgical N95 respirators	0.08	1.01
Face shield	0.01	0.09
Protective goggles	0.06	1.96
Examination gloves	1.22	0.43
Open System (ABI- 7500 SARS COV-2 test) [1 test]	0.00	0.42
SARS-CoV-2 RT-PCR Kit 1.0 [96 tests]	0.05	4.01
Nasopharyngeal swab with Transport Media	0.06	1.06



Critically low stock

Stock status safe for >3 months

Stock status safe for >6 months

ICT AND INNOVATIONS

- The Uganda COVID-19 dashboard can be accessed at <https://covid19.gou.go.ug/>



3. Challenges

- Lack of adequate PPE at lower health facilities.
- Installation of the Intensive Care Unit at Gulu RRH has not yet been done by the MoH team of Engineers.
- Most isolation units lack additional logistics like mattresses, beds, bed sheets, facilitation for personnel in isolation centers and food for those in isolation.

4. Conclusion

The Ministry of Health in collaboration with other government ministries, agencies and departments and districts continues to strengthen the COVID-19 outbreak response mechanisms.
