



## Situation Update

### KEY HIGHLIGHTS

- **No new COVID-19 confirmed case** has been reported in the last 24 hours. The cumulative total of **COVID-19 confirmed cases** in the country remains **55**.
- Eighty-seven percent (48/55) are imported cases, 9% are local transmissions (5/55) while 3% have an unknown chain of transmission (2/55).
- There were **8 discharges** from Mulago Hospital. The cumulative number of recoveries is **20**.
- A cumulative total of **1,395 contacts** have been listed to date, **1,079 (77%)** of whom have completed the mandatory 14-day follow up period and have been discharged from daily follow up.
- A total of **173 high-risk travellers (936 discharged)** are under institutional quarantine.

### Background

Since the declaration of the outbreak in China in December 2019, the Government of Uganda established early and proactive measures that enabled early detection. On 21<sup>st</sup> March 2020, the Ministry of Health of Uganda confirmed the 1<sup>st</sup> outbreak of COVID-19 in the country.

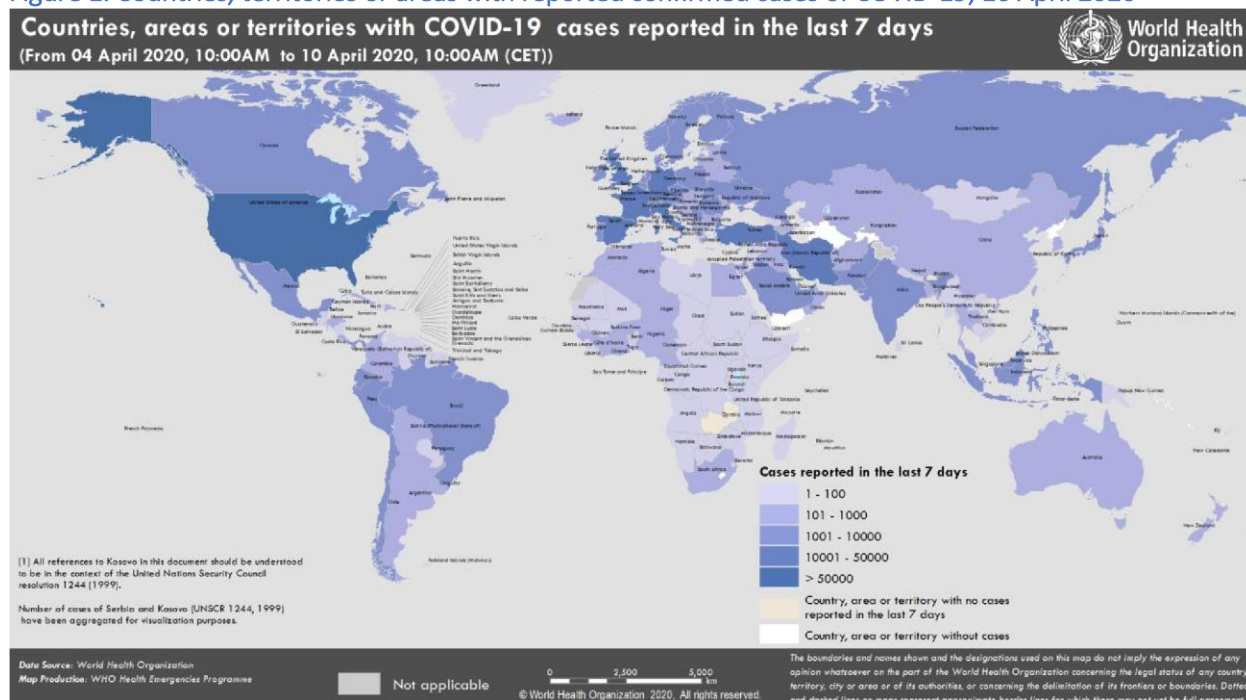
On 18<sup>th</sup> March 2020, H.E the President of Uganda declared COVID-19 a national emergency and put in place several measures. The COVID-19 Incident Management System moved to response mode to coordinate the implementation of various response activities.



**GLOBAL STATISTICS**

Region	Confirmed (new)	Deaths (new)
Globally	1,991,562 (76,647)	130,885 (7,875)
European Region	1,013,093 (35,497)	89,317 (4,710)
Region of the Americas	707,121 (33,760)	30,245 (2,909)
Western Pacific Region	125,571 (1,367)	4,239 (38)
Eastern Mediterranean Region	111,432 (4,043)	5,532 (137)
South-East Asia Region	21,790 (1,503)	990 (54)
African Region	11,843 (477)	550 (27)

Figure 1. Countries, territories or areas with reported confirmed cases of COVID-19, 16 April 2020





## Summary of COVID-19 outbreak in Uganda

Summary statistics as of 16 <sup>th</sup> April 2020 at 22:00 hrs	
High-risk travelers under institutional quarantine today	173
<b>Suspected cases</b>	00
<b>Probable cases</b>	00
<b>Confirmed cases</b>	55
Cumulative deaths (probable and confirmed)	00
Health facilities	00
Community	00
Deaths among confirmed cases	00
Cases on admission (probable and confirmed)	42
Probable	00
Confirmed	42
<b>Cumulative number of discharged cases</b>	12
Runaways from isolation	00
Cumulative <b>contacts</b> listed	1,395
<b>Contacts</b> followed up today	267/316 (84%)
<b>Contacts</b> that have completed 14 days	1,063
Specimens collected and sent to the lab today	1,162
Cumulative specimens collected	8,855
Number of cases with positive results today	00
Cumulative cases with positive results	55
Cumulative samples tested negative	8,800
Specimens with pending results	00
Date of cure (negative test) of last confirmed case	15/04/2020



## 2. Public Health Actions

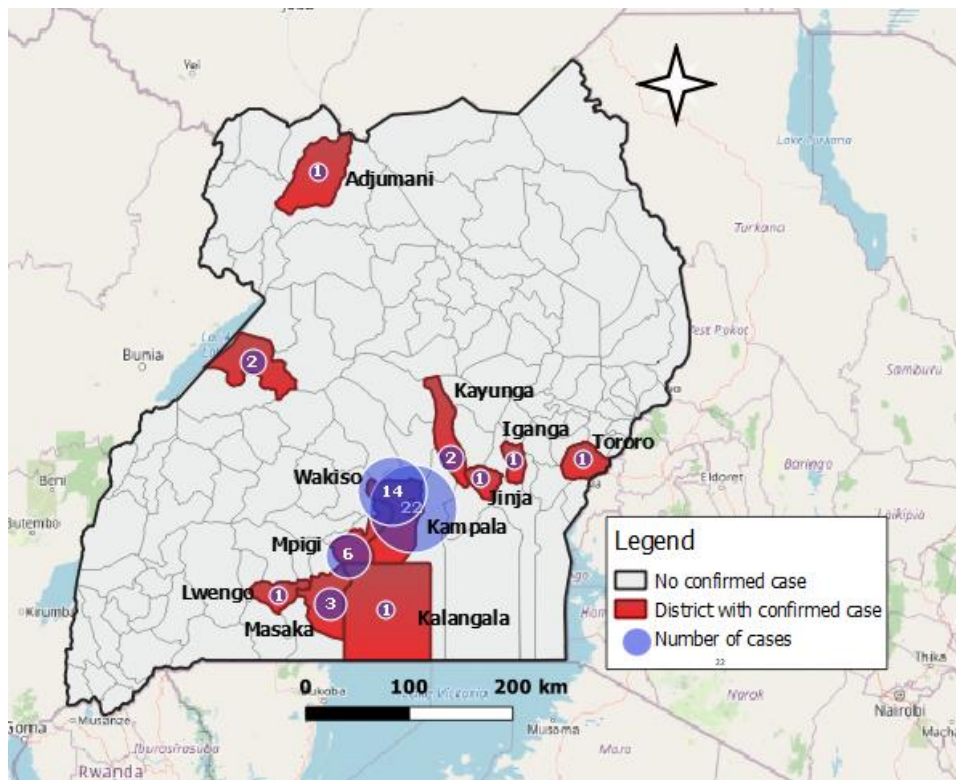
### COORDINATION

- The Hon. Minister of Health oriented field teams to be deployed for regional technical support.
- The IMT attended the Joint Taskforce meeting at the National Command Centre to discuss point of entry surveillance and sample testing.
- The IMT chaired by the Incident Commander continues to meet thrice daily.

### SURVEILLANCE AND LABORATORY

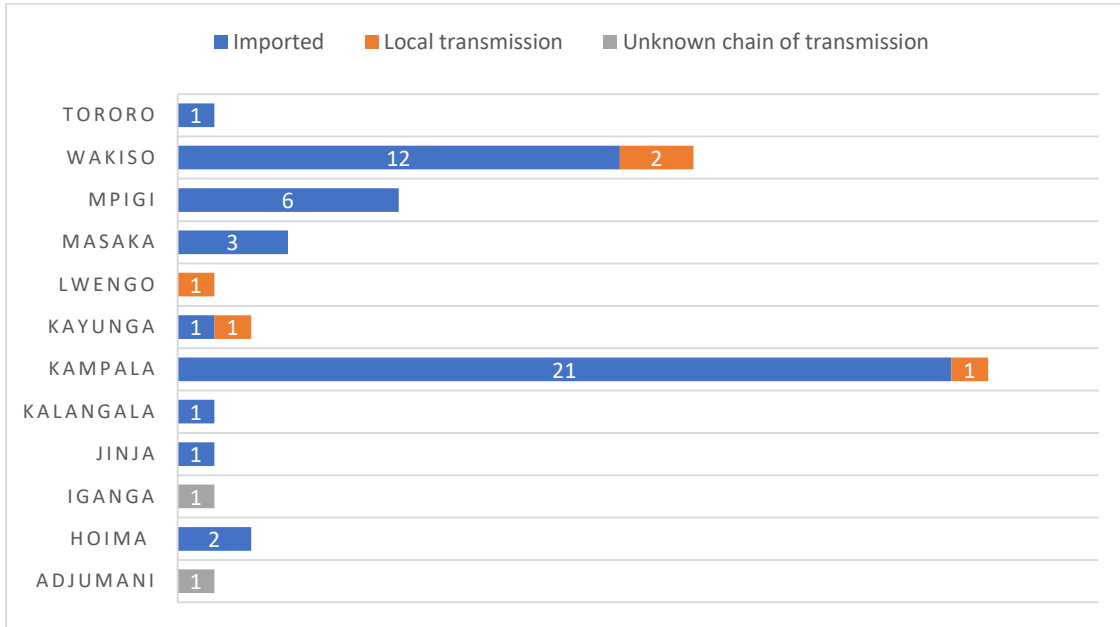
- A total of 55 confirmed cases have been line listed; of these, 48 are imported cases, 5 are locally transmitted while 2 have an unknown chain of transmission.

**Distribution of confirmed cases by district of residence**

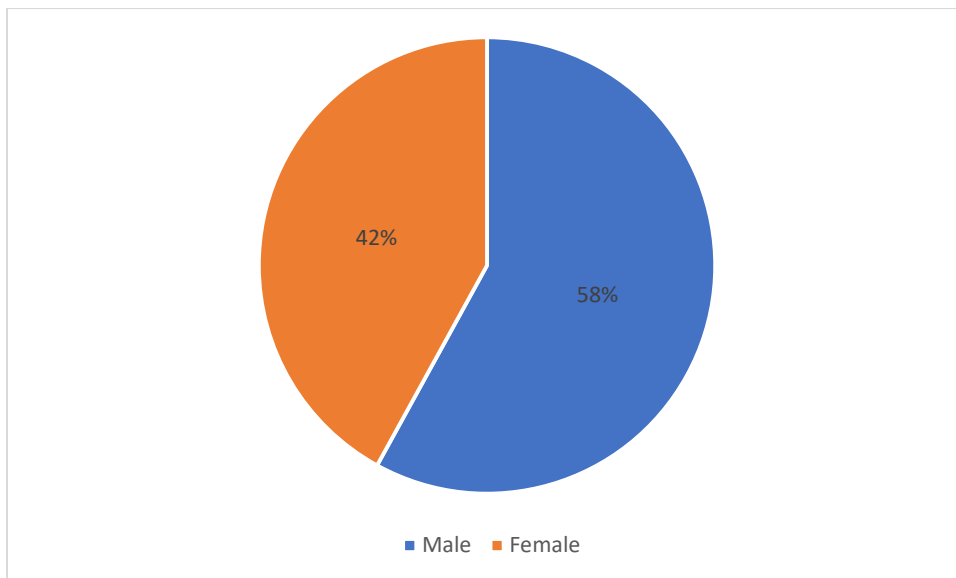




**Source of COVID-19 transmission and total cases by district of residence**



**Distribution of confirmed cases by sex**

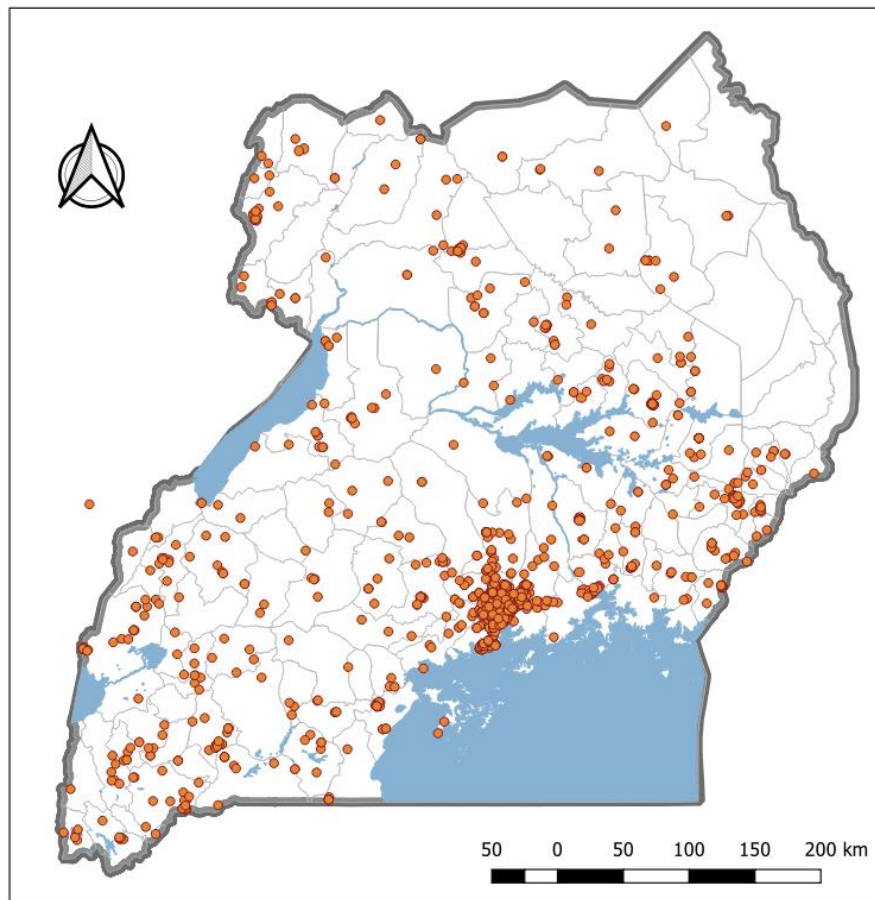




- Progress on reaching out to the 18,128 high-risk travellers (7<sup>th</sup> – 22<sup>nd</sup> March 2020) is represented in the table below:

Indicator	Total
Number of high-risk travellers identified	18,128
Number of high-risk travellers with confirmed location	4,568 (25%)
Number and proportion reached by phone call	1,236 (27%)
Number and proportion of samples collected	158 (KCCA)
Samples that tested positive	00

**Spatial distribution of 4,568 travellers of 18,128**





The table below presents a summary of contact tracing

VARIABLE	OUTPUT
Total confirmed cases	55
Confirmed cases with listed contacts	54
Total contacts under follow up today	316
% of follow up	84%
Not followed up	49
Cumulative contacts with symptoms	203
Cumulative total of contacts that turned positive	5

- One thousand one hundred and sixty-two (1,162) samples were collected from suspected cases today bringing it to a cumulative total of 8,855 samples sent to UVRI. Eight hundred and thirty-nine (839) were collected at points of entry while 323 were collected from other areas within Uganda.
- The table below represents a summary of sample collection amongst contacts:

**Sample collection amongst contacts**

Indicators	Total
Cumulative number of contacts listed	1,395
Contacts with collected lab samples	1,245
Percentage of collected lab samples from contacts	89%

**CASE MANAGEMENT**

- There are 35 confirmed cases currently admitted and all are in stable clinical condition.

Isolation unit	No. of confirmed cases	Discharges
Mulago Hospital	11	11
Entebbe Grade B Hospital	23	07





Adjumani General Hospital	00	01
Hoima RRH	00	01
Home	01	N/A

## RISK COMMUNICATION AND SOCIAL MOBILIZATION

- The team continues to release daily press briefs to update the general public on the COVID-19 outbreak.
- Community film van drives continue to cover the different parishes of the 5 Divisions of Kampala Capital City Authority (KCCA) and also support mobilisation of food distribution in the different areas of Kampala.
- All social media posts are running under the hashtag #STAYSAFEUG.
- The team sensitized community members in the neighborhoods from which the 4 discharged cases come from to limit stigma.

## LOGISTICS

- The quantification of medical and health supplies to be used to protect health workers and treat those infected with Covid-19 has been updated as at 11<sup>th</sup> April 2020.
- Availability of key supplies:  
Full PPE Kits: there are 4,300 kits available (equivalent to 0.28 months of stock (MoS) at the current consumption. These have been transferred from WFP to NMS.
- Surgical masks (4.6 MoS), Coveralls with hoods (1.9 MoS), and disposable aprons (5.4 MoS) are available.
- The other PPE supplies are available in quantities that are less than one month of stock at the current consumption.
- Disinfectants (Sanitizers): Sodium hypochlorite (Jik), Alcohol-based hand rub, 1L NaDCC (Chlorine) tablets and Soap are available but in quantities that are less than a month of stock.

## ICT AND INNOVATIONS

- Finalized implementation of the sample tracking system and trained staff from KCCA.





- Linked the lab testing machines to the logistic management information system for quick results processing.
- Finalized format for the daily analytical report - the first report will be ready on 16<sup>th</sup> April 2020.
- The Uganda COVID-19 dashboard can be accessed at <https://covid19.gou.go.ug/>

### 3. Conclusion

The Ministry of Health in collaboration with other government ministries, agencies and departments is continuing to strengthen the COVID-19 outbreak response mechanisms.

---

#### CASE DEFINITIONS

##### Community case definition

Any person or group of persons with flu like symptoms such as running nose, sneezing, cough, sore throat and difficulty in breathing.

##### Suspect case

- A. Any person with acute respiratory illness with high temperature (above 37.5°C) and at least one sign/symptom of respiratory illness (e.g., cough, shortness of breath), **AND** with no other cause that fully explains the clinical presentation **AND** a history of travel in the last 14 days prior to symptom onset from a country/area or territory reporting local transmission of COVID-19 disease

**OR**

- B. Any person with any acute respiratory illness **AND** having been in contact with a confirmed or probable COVID-19 case in the last 14 days prior to onset of symptoms

**OR**

- C. Any person with severe acute respiratory infection with high temperature (above 37.5°C) and at least one sign/symptom of respiratory illness (e.g., cough, shortness breath) **AND**



requiring hospitalization AND with no other cause that fully explains the clinical presentation.

**Probable case:** A suspect case for whom testing for COVID-19 is inconclusive.

**Confirmed case:** A person with laboratory confirmation of COVID-19 infection, irrespective of clinical signs and symptoms.