



# Uganda COVID-19 Situation Report



25 March 2020, 18:00

Sitrep #38

## 1. Situation Update

### Key highlights

- No new **COVID-19 confirmed cases** have been reported today. There is a total of **14 confirmed cases** within the country.
- A total of **635 travelers** from Dubai, UAE (within the past 14 days) have been listed today.
- A total of **1,206** identified high-risk travelers are under follow up; **771 (64%)** of these are under institutional quarantine while **435 (36%)** under self-isolation.
- A cumulative total of **1,455** high-risk travellers have completed 14 days of follow-up.

### Background

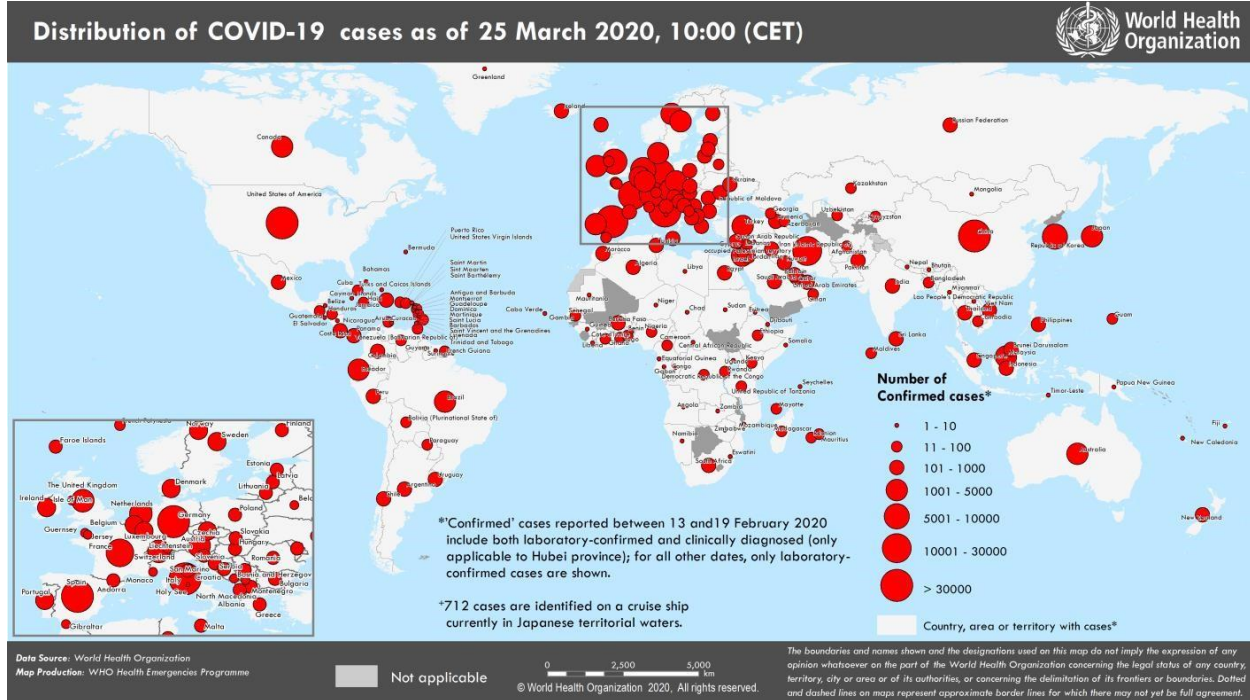
On 21<sup>st</sup> March 2020, the Ministry of Health of Uganda confirmed the 1<sup>st</sup> outbreak of COVID-19 in the country. The index case is a 36-year-old Ugandan male who arrived from Dubai, United Arab Emirates to Entebbe International Airport (EIA) at 02:00 am on 21<sup>st</sup> March 2020 aboard Ethiopian Airlines. On being screened at the airport, his temperature was 38.7°C. He also presented with poor appetite and was consequently evacuated to Entebbe Grade B hospital where a nasal swab was taken for analysis. His nasal swab samples were sent to Uganda Virus Research Institute (UVRI) and tested positive for COVID-19.

Since the declaration of the outbreak in China in December 2019, the Government of Uganda established early and proactive measures that enabled early detection of this confirmed case. On 18<sup>th</sup> March 2020 the President of Uganda declared COVID-19 a national emergency and ordered the closure of all educational institutions and imposed restrictions on all outbound and inbound international travel on 22<sup>nd</sup> March 2020. The COVID-19 Incident Management System has now moved to response mode to coordinate the implementation of various response activities.

# GLOBAL STATISTICS

Region	Confirmed (new)	Deaths (new)
<b>Globally</b>	414,179 (40,712)	18,440 (2,202)
<b>Western Pacific Region</b>	97,766 (1,186)	3,518 (16)
<b>European Region</b>	220,516 (25,007)	11,986 (1,797)
<b>South-East Asia Region</b>	2,344 (354)	72 (7)
<b>Eastern Mediterranean Region</b>	29,631 (2,416)	2,008 (131)
<b>Region of the Americas</b>	60,834 (11,390)	813 (248)
<b>African Region</b>	1,664 (359)	29 (3)

Figure 1. Countries, territories or areas with reported confirmed cases of COVID-19, 25 March 2020



**Table 1: Summary of COVID-19 outbreak in Uganda**

<b>Summary statistics as of 24<sup>th</sup> March 2020 at 1800hrs</b>	
Cumulative high-risk travelers identified from EIA	2,661
Cumulative high-risk travelers that have completed 14 days follow up	1,455
Travelers under follow up (institutional and self-isolation) today	1,206
High-risk travelers under institutional quarantine (including self-reporting travelers) today	771
High-risk travelers under self-isolation today	435
<b>Suspected</b>	00
Probable	00
<b>Confirmed</b>	14
Cumulative deaths (probable and confirmed)	00
Health facilities	00
Community	00
Deaths among confirmed cases	00
Cases on admission (probable and confirmed)	14
Probable	00
Confirmed	14
Runaways from isolation	00
Cumulative <b>contacts</b> listed	83
<b>Contacts</b> that have completed 14 days	00
Cumulative travelers from Dubai within the past 14 days listed	635
Specimens collected and sent to the lab today	104
Cumulative specimens collected	308
Cumulative cases with lab confirmation	14
Number of cases with positive results today	00
Cumulative cases with positive results	14
Cumulative samples tested negative	294
Specimens with pending results	00
Date of discharge/death of last confirmed case	N/A

## 2. Public Health Actions

### COORDINATION

- His Excellency the President of Uganda gave his fifth address to the country in relation to the COVID-19 pandemic. He gave additional guidelines on steps the government is taking to

prevent further spread of COVID-19:

- Suspension of all public transport for an initial period of 14 days in order to minimize movement.
- Suspension of trading in non-food items such as phones, shoes and clothes, etc.
- Each government ministry, department and agency to work out a plan of essential staff that should remain on duty.
- All government cars excluding army and police to be deployed at district headquarters under the command of the District Health Officer for purposes of responding to COVID-19 related cases.
- The Director General of Health Services held a press briefing during which he informed the general public of the new confirmed COVID-19 cases. He also urged the public to remain calm and vigilant in order to defeat this outbreak.

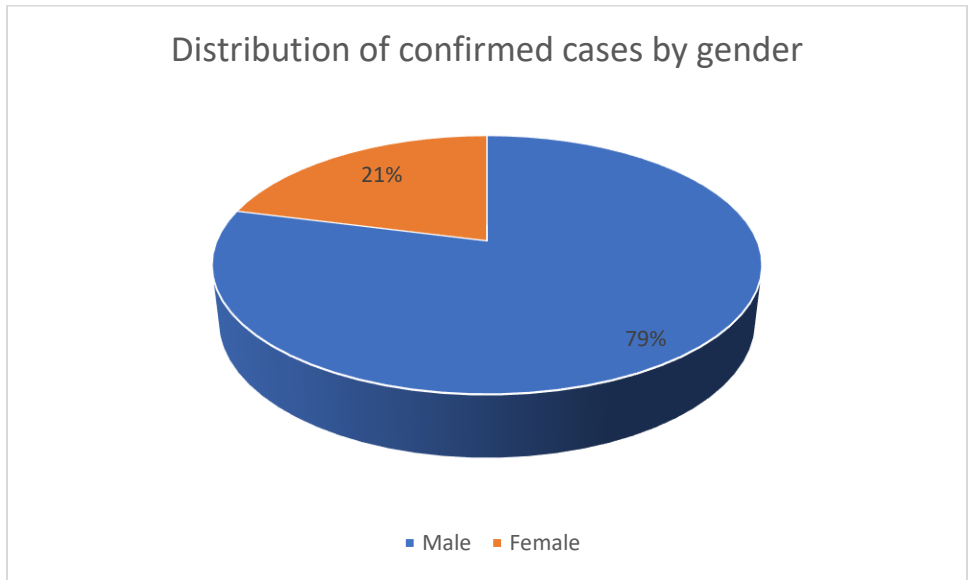
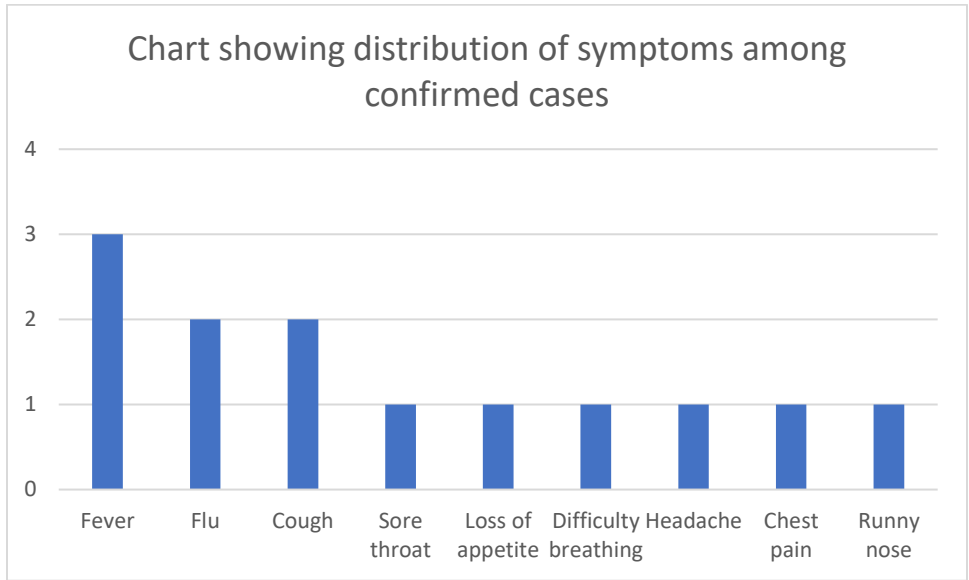
## **SURVEILLANCE AND LABORATORY**

- There are 14 confirmed cases currently admitted in the Entebbe Isolation facility; 2 of whom were admitted on 24<sup>th</sup> March 2020.
- Sixty-one (61) new travelers from Dubai, UAE (within the past 14 days) were identified through the Public Health Emergency Operations Centre bringing it to a cumulative total of 635.
- One hundred and four (104) samples were collected from suspected cases today bringing it to a cumulative total of 308 samples sent to UVRI. Out of these, 14 have tested positive for COVID-19.

**Table showing the number of travelers under institutional quarantine**

	<b>Hotel</b>	<b>No. of nationals</b>	<b>No. of foreigners</b>	<b>Travellers Discharged</b>	<b>Total</b>
1	Central Inn	11	18	0	29
2	Durban Mootel Najanankumbi	17	2	0	19
3	Protea Hotel	28	13	0	41
4	Pulikan	9	1	0	10
5	Ndere Suits	8	0	0	8
6	Haart Hotel	7	1	0	8
7	Grand Hotel	103	4	0	107
8	Douglas Villas	90	5	0	95
9	Emin Pasha	22	2	0	24
10	Imperial Botanical	6	52	0	58
11	Frontier	3	9	0	12
12	Migingoo Suits	6	15	0	21
13	Imperial Golf	0	1	0	1

14	Nyumbani	39	14	0	53
15	Watoto	132	0	0	132
16	Arch Apartment	74	4	0	78
17	Katomi Kingdom	43	1	0	44
18	Petit Siagon	3	35	7	31
	<b>TOTAL</b>				<b>771</b>



### CASE MANAGEMENT

- All cases are progressing well. Temperatures recorded yesterday indicate all cases are afebrile and ambulating.
- The cases are cooperating with the health staff and aiding in cleaning of their own rooms – this has reduced workload on the few health worker

## **RISK COMMUNICATION AND SOCIAL MOBILIZATION**

- Public health awareness on COVID-19 ongoing on media stations countrywide.
- Revising health education messages to reflect the current situation in the country i.e. transitioning to response mode. This will intensify public awareness on all channels.

## **LOGISTICS**

- UVRI received 1000 probes and primers from Africa CDC
- 1000 dacron swabs were received by the Central Public Health Laboratories
- Collection swab for the regional laboratories were dispatched today; each regional laboratory will get 56 swabs

## **ICT AND INNOVATIONS**

- The COVID-19 dashboard is up and running. It can be accessed at <https://covid19.gou.go.ug/>

## **3. Conclusion**

As a country, the Ministry of Health in collaboration with other government ministries, agencies and departments has established a strong response system to be able to prevent, detect and respond to suspected cases of COVID-19.

## **CASE DEFINITIONS**

### **Community case definition**

Any person or group of persons with flu like symptoms such as running nose, sneezing, cough, sore throat and difficulty in breathing.

### **Suspect case**

- A. Any person with acute respiratory illness with high temperature (above 37.5°C) and at least one sign/symptom of respiratory illness (e.g., cough, shortness of breath), **AND** with no other cause that fully explains the clinical presentation **AND** a history of travel in the last 14 days prior to symptom onset from a country/area or territory reporting local transmission of COVID-19 disease

**OR**

- B. Any person with any acute respiratory illness **AND** having been in contact with a confirmed or probable COVID-19 case in the last 14 days prior to onset of symptoms

**OR**

- C. Any person with severe acute respiratory infection with high temperature (above 37.5°C) and at least one sign/symptom of respiratory illness (e.g., cough, shortness breath) **AND** requiring hospitalization **AND** with no other cause that fully explains the clinical presentation.

**Probable case:** A suspect case for whom testing for COVID-19 is inconclusive.

**Confirmed case:** A person with laboratory confirmation of COVID-19 infection, irrespective of clinical signs and symptoms.