



COVID-19 Situation Report

22 March 2020, 18:00

Sitrep #35

1. Situation Update

Key highlights

- One confirmed COVID-19 case has been reported in the country
- A total number of **96 contacts have been** listed today
- A total of **66 new high-risk travelers** have been listed for follow up, making a cumulative total of **2,661 high-risk travelers** listed since the start of the preparedness activities
- A total of **1,356** identified high-risk travelers are under follow up; **582 (43%)** of these are under institutional quarantine while **774 (57%)** under self-isolation
- A cumulative total of **1,305** high-risk travelers completed their 14 days of follow-up

Background

On 21st March 2020, the Ministry of Health of Uganda confirmed the 1st outbreak of COVID-19 in the country. The index case is a 36-year-old Ugandan male who arrived from Dubai, United Arab Emirates to Entebbe International Airport (EIA) at 02:00 am on 21st March 2020 via Ethiopian Airlines. During the screening process at the airport, his temperature was 38.7°C. He also presented with poor appetite and was consequently evacuated to Entebbe Grade B hospital where a nasal swab was taken for analysis. His nasal swab samples were sent to Uganda Virus Research Institute (UVRI) and tested positive for COVID-19.

The Government of Uganda had taken early and proactive measures that enabled early detection of this confirmed case. Besides closing all educational institutions and imposing restrictions on all outbound and inbound international travel, the state declared COVID-19 a national emergency. The COVID-19 Incident Management System has now moved to response mode to coordinate the implementation of various response activities.

GLOBAL STATISTICS

| Region | Confirmed (new) | Deaths (new) |
|------------------------------|------------------|----------------|
| Globally | 292,142 (26,069) | 12,784 (1,600) |
| Western Pacific Region | 94,787 (750) | 3,438 (12) |
| European Region | 151,293 (22,752) | 7,426 (1,426) |
| South-East Asia Region | 1,257 (278) | 45 (7) |
| Eastern Mediterranean Region | 23,669 (1,314) | 1,596 (130) |
| Region of the Americas | 19,685 (808) | 252 (17) |
| African Region | 739 (167) | 20 (8) |

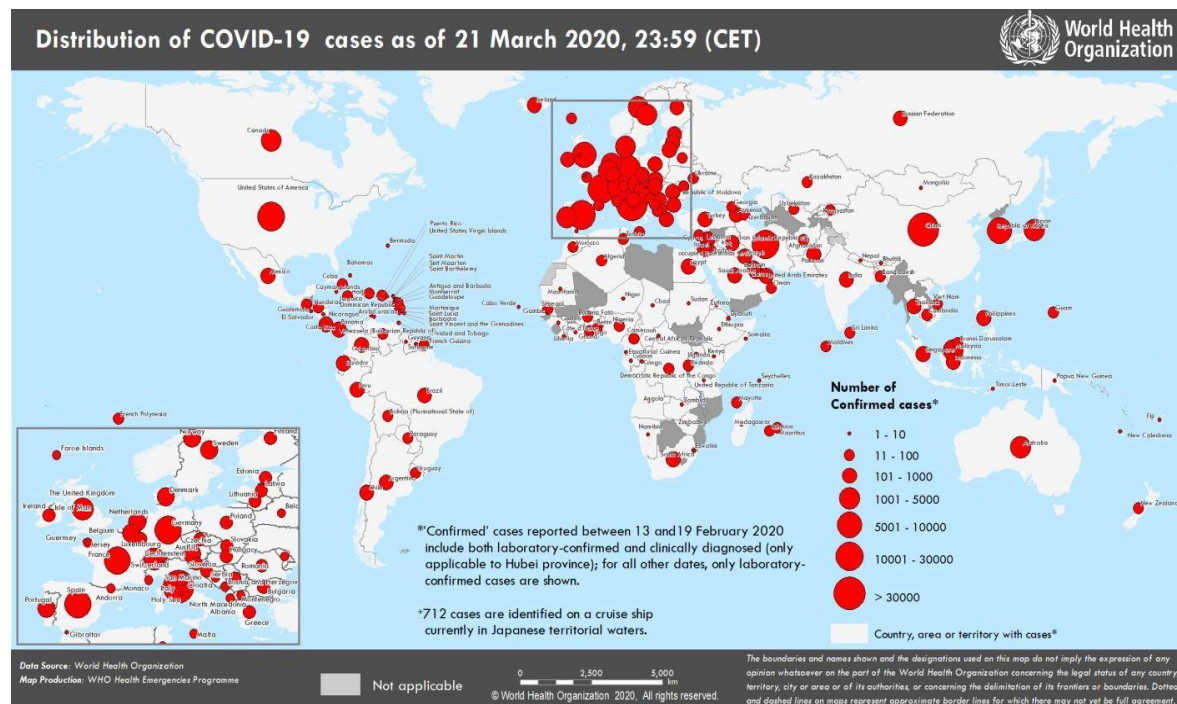


Table 1: Summary of COVID-19 outbreak in Uganda

| Summary statistics as of 22 nd March 2020 at 1800hrs | |
|--|-------|
| Total (cumulative) number of high-risk travelers identified | 2,661 |
| Cumulative total of high-risk travelers that completed 14 days follow up | 1,305 |
| Total number of high-risk travelers under institutional quarantine | 582 |
| Total number of high-risk travelers under self-isolation | 774 |
| Travelers of Ugandan nationality | 514 |
| Number of high-risk travelers listed in the last 24 hours (new) | 66 |
| Suspected | 00 |
| Probable | 00 |
| Confirmed | 01 |
| Cumulative deaths (probable and confirmed) | 00 |
| Health facilities | 00 |
| Community | 00 |

| | |
|---|-----|
| Deaths among confirmed cases | 00 |
| Number of cases on admission (probable and confirmed) | 01 |
| Probable | 00 |
| Confirmed | 01 |
| Suspect cases on admission under investigation | 06 |
| Runaways from isolation | 00 |
| Total number of contacts listed as of today | 96 |
| Number of contacts that have completed 14 days | 00 |
| New alerts today | 11 |
| Specimens collected and sent to the lab. today | 22 |
| Cumulative specimens collected | 91 |
| Cumulative cases with lab confirmation | 01 |
| Cumulative samples tested negative | 84 |
| Specimens with pending results | 06 |
| Date of discharge/death of last confirmed case | N/A |

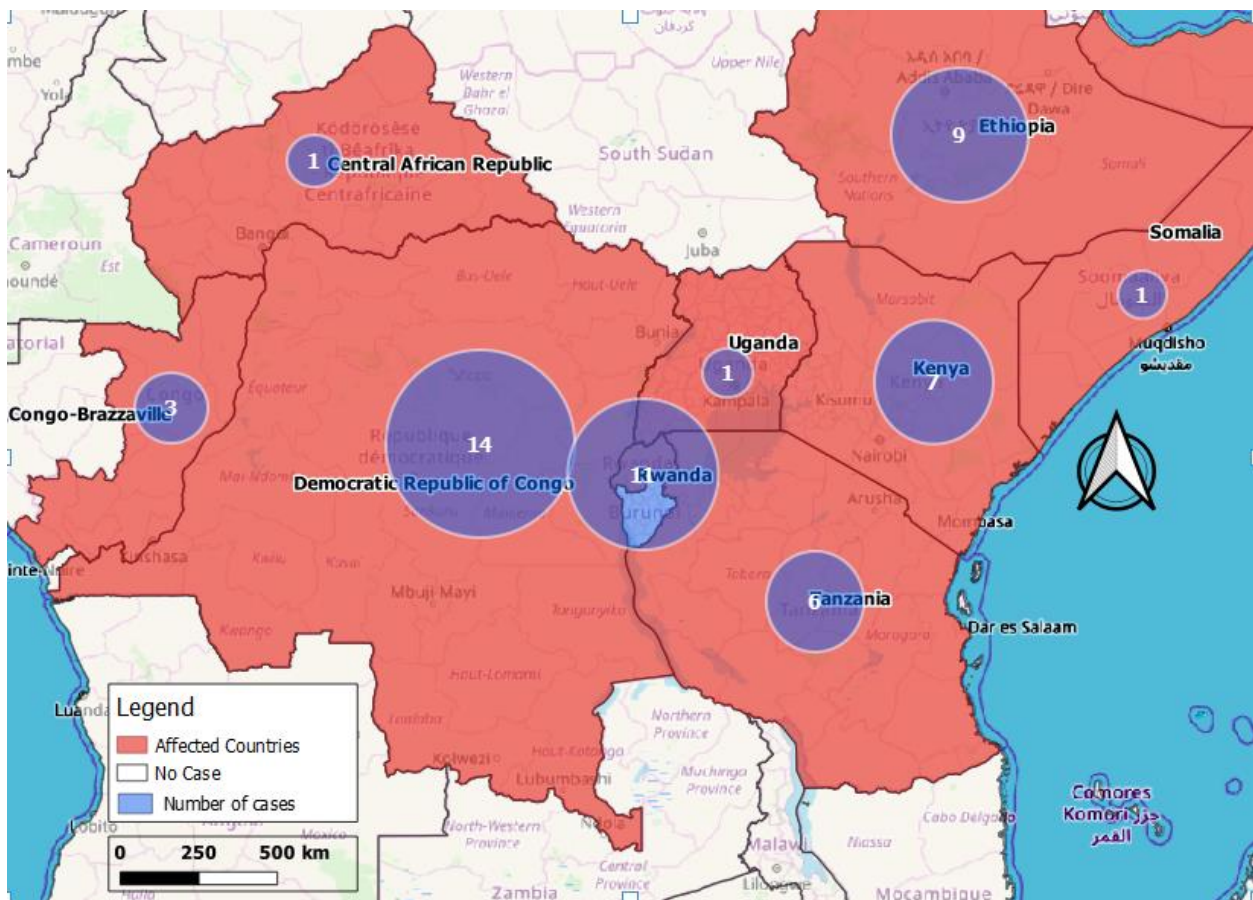
COORDINATION

- H.E the President of Uganda gave a second presidential address on COVID-19 during which he elaborated on further measures to be taken to limit importation of COVID-19:
 - No passenger planes will be allowed to land or exit Uganda. Only cargo planes and their crew members will be allowed in the public.
 - People crossing into Uganda from the ground crossing border points are prohibited.
- An emergency NTF meeting was held today. There is urgent need to develop a 72 hour response plan to identify priority actions.

SURVEILLANCE AND LABORATORY

- Eleven (11) alerts were received through the Public Health Emergency Operations Centre. Upon verification only 3 of these met the case definition.
- A cumulative number of 91 samples from suspect cases have been tested by UVRI. Eighty-four of these have tested negative, 1 tested positive and 6 are pending.

Map showing distribution of COVID-19 cases in the Eastern Africa region.



CASE MANAGEMENT

- Emergency sub-committee meeting held today and a new chair was appointed
- Conducted IPC training for hotels in Entebbe
- Team continues to manage the confirmed case in isolation. Patient is stable.

RISK COMMUNICATION AND SOCIAL MOBILIZATION

- Public health awareness on COVID-19 ongoing on media stations countrywide.

Planned activities

- Revising health education messages to reflect the current situation in the country i.e. transitioning to response mode. This will intensify public awareness on all channels.
- Resource mobilization for further risk communication and community engagement.

LOGISTICS

- Reviewed logistics quantification for COVID-19 to reflect the response mode.
- Deployed PPEs and supplies to Entebbe Grade B Hospital to manage the confirmed case.

ICT AND INNOVATIONS

- The team is starting a pilot phase for the tech solutions. These include: follow-up for those on self-isolation, follow-up for those in quarantine, travel declaration form and a Covid-19 Information portal.

Conclusion

As a country, the Ministry of Health has established a strong response system to be able to prevent, detect and respond to suspected cases of COVID-19 in collaboration with other relevant ministries, agencies and departments of Government.

CASE DEFINITIONS

Community case definition

Anybody with flu-like symptoms should reported to the nearest health facility for assessment.

Suspect case

- A. Any person with acute respiratory illness with high temperature (above 37.5°C) and at least one sign/symptom of respiratory illness (e.g. headache, sore throat, cough, shortness of breath), **AND** with no other cause that fully explains the clinical presentation **AND** a history of travel in the last 14 days prior to symptom onset from a country/area or territory reporting local transmission of COVID-19 disease

OR

- B. Any person with any acute respiratory illness **AND** having been in contact with a confirmed or probable COVID-19 case in the last 14 days prior to onset of symptoms

OR

- C. Any person with severe acute respiratory infection with high temperature (above 37.5°C) and at least one sign/symptom of respiratory illness (e.g., cough, shortness breath) **AND** requiring hospitalization **AND** with no other cause that fully explains the clinical presentation.

Probable case: A suspect case for whom testing for COVID-19 is inconclusive.

Confirmed case: A person with laboratory confirmation of COVID-19 infection, irrespective of clinical signs and symptoms.